

NYISO CEO/COO Report

Stephen Whitley
President & Chief Executive Officer

Rick Gonzales
*Senior Vice President & Chief Operating Officer
New York Independent System Operator*

Management Committee Meeting
*June 26, 2014
New York, NY*

NYISO CEO/COO Report

CEO Report

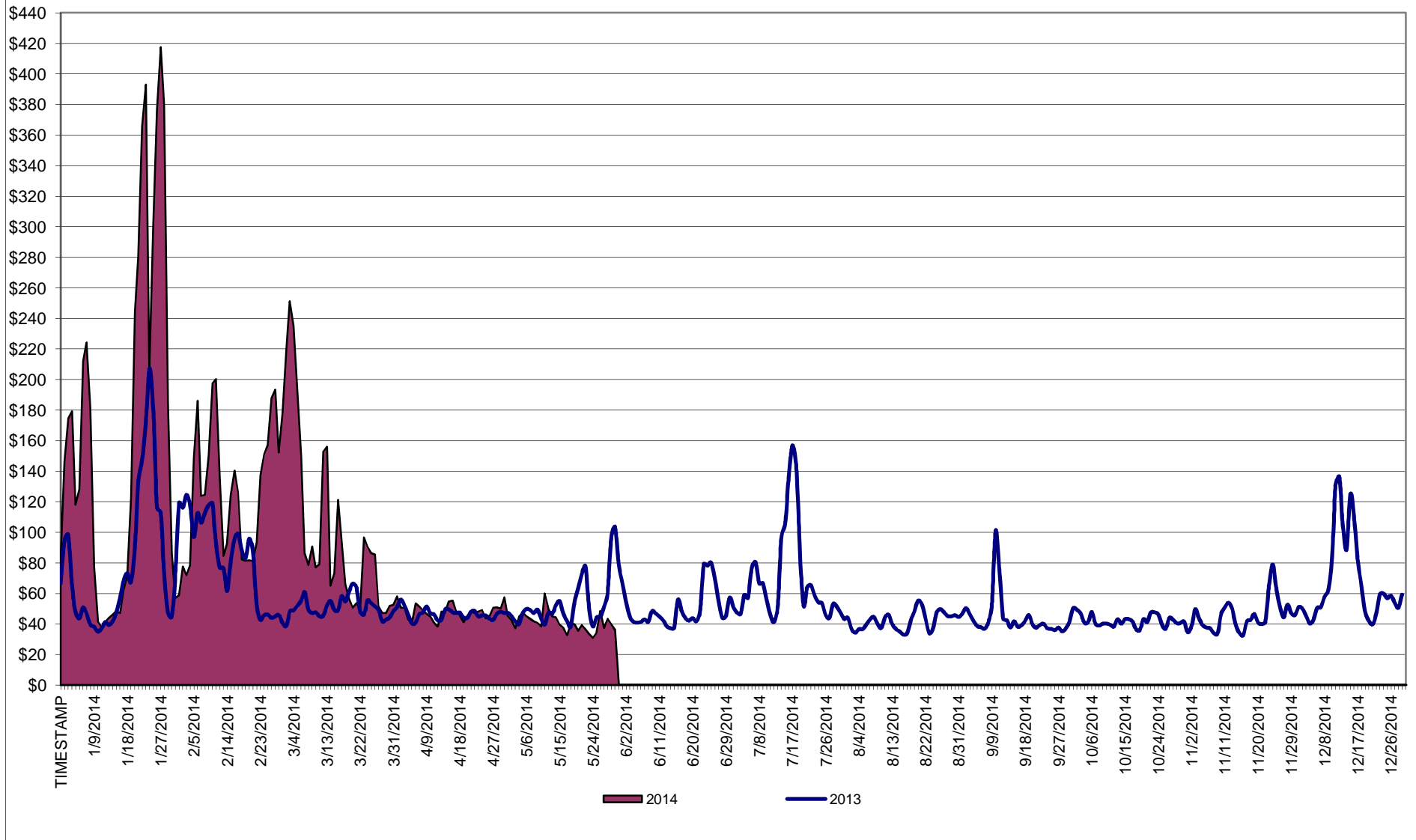
COO Report

- ◆ **Market Performance Highlights – For Information Only**
- ◆ **Operations Performance Metrics Monthly Report**

Market Performance Highlights for May 2014

- **LBMP for May is \$40.29/MWh; 13% lower than \$46.08/MWh in April 2014 and 23% lower than \$52.21/MWh in May 2013.**
 - Day Ahead and Real Time Load Weighted LBMPs are lower compared to April.
- **May 2014 average year-to-date monthly cost of \$108.12/MWh is a 65% increase from \$65.46/MWh in May 2013.**
- **Average daily sendout is 391 GWh/day in May; comparable to 390 GWh/day in April 2014 and lower than 407 GWh/day in May 2013.**
- **Natural gas and distillate prices were lower compared to the previous month.**
 - Natural Gas (Transco Z6 NY) was \$3.46/MMBtu, down 16% from \$4.12/MMBtu in April.
 - Jet Kerosene Gulf Coast was \$21.25/MMBtu, down from \$21.42/MMBtu in April.
 - Ultra Low Sulfur No.2 Diesel NY Harbor was \$20.98/MMBtu, down from \$21.15/MMBtu in April.
- **Uplift per MWh is higher compared to the previous month.**
 - Uplift (not including NYISO cost of operations) is \$0.07/MWh; higher than (\$0.09)/MWh in April.
 - The Local Reliability Share is \$0.51/MWh, higher than \$0.15 in April.
 - The Statewide Share is (\$0.44)/MWh, lower than (\$0.24)/MWh in April.
 - TSA \$ per NYC MWh is \$0.0028/MWh.
 - Total uplift costs (Schedule 1 components including NYISO Cost of Operations) are higher than April.

Daily NYISO Average Cost/MWh (Energy & Ancillary Services)*
 2013 Annual Average \$59.13/MWh
 May 2013 YTD Average \$65.46/MWh
 May 2014 YTD Average \$108.12/MWh



* Excludes ICAP payments.

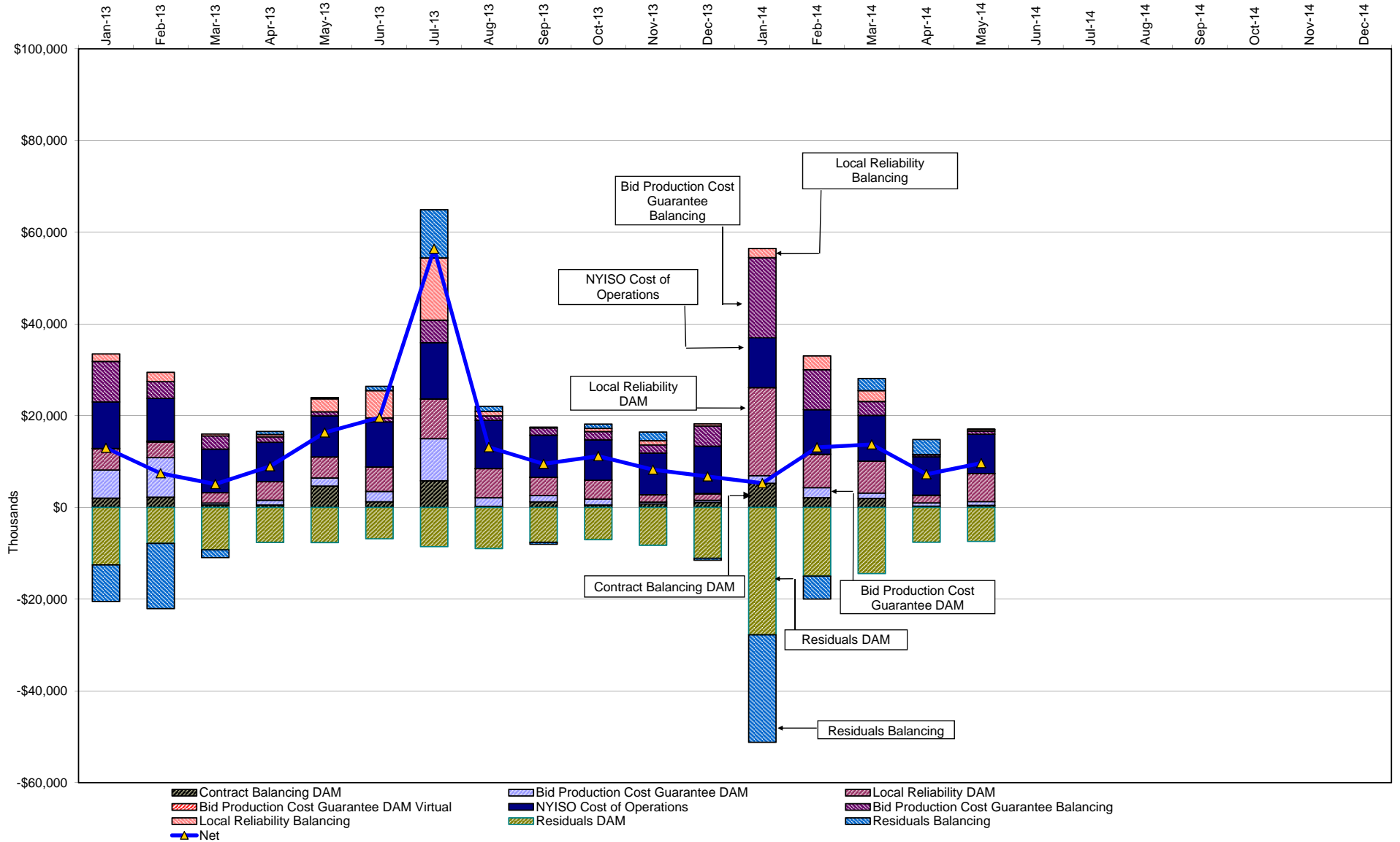
NYISO Average Cost/MWh (Energy and Ancillary Services) *
from the LBMP Customer point of view

2014	<u>January</u>	<u>February</u>	<u>March</u>	<u>April</u>	<u>May</u>	<u>June</u>	<u>July</u>	<u>August</u>	<u>September</u>	<u>October</u>	<u>November</u>	<u>December</u>
LBMP	183.25	123.16	109.57	46.08	40.29							
NTAC	0.56	0.64	0.39	1.18	0.69							
Reserve	0.78	0.49	0.56	0.46	0.28							
Regulation	0.27	0.21	0.22	0.13	0.12							
NYISO Cost of Operations	0.69	0.69	0.69	0.69	0.69							
Uplift	(0.36)	0.25	0.26	(0.09)	0.07							
Uplift: Local Reliability Share	1.38	0.73	0.64	0.15	0.51							
Uplift: Statewide Share	(1.73)	(0.49)	(0.38)	(0.24)	(0.44)							
Voltage Support and Black Start	0.36	0.36	0.36	0.36	0.36							
Avg Monthly Cost	185.55	125.81	112.06	48.82	42.50							
Avg YTD Cost	185.55	157.40	142.40	121.69	108.12							
TSA \$ per NYC MWh	0.00	0.00	0.00	0.00	0.00							
2013	<u>January</u>	<u>February</u>	<u>March</u>	<u>April</u>	<u>May</u>	<u>June</u>	<u>July</u>	<u>August</u>	<u>September</u>	<u>October</u>	<u>November</u>	<u>December</u>
LBMP	79.77	85.76	48.94	44.47	52.21	50.17	68.49	40.81	44.24	39.85	43.30	66.41
NTAC	0.79	0.83	0.76	0.90	0.85	0.86	0.66	0.28	0.57	0.87	1.08	0.59
Reserve	0.38	0.44	0.43	0.36	0.49	0.34	0.50	0.32	0.38	0.42	0.38	0.44
Regulation	0.13	0.13	0.10	0.11	0.09	0.13	0.11	0.13	0.13	0.16	0.13	0.12
NYISO Cost of Operations	0.69	0.69	0.69	0.69	0.69	0.69	0.69	0.69	0.69	0.69	0.69	0.69
Uplift	0.21	(0.15)	(0.33)	0.02	0.41	0.49	2.06	0.03	(0.05)	0.18	(0.07)	(0.25)
Uplift: Local Reliability Share	0.44	0.40	0.19	0.37	0.58	0.81	1.27	0.49	0.31	0.38	0.19	0.12
Uplift: Statewide Share	(0.23)	(0.55)	(0.52)	(0.35)	(0.17)	(0.31)	0.79	(0.46)	(0.36)	(0.19)	(0.25)	(0.37)
Voltage Support and Black Start	0.36	0.36	0.36	0.36	0.36	0.36	0.36	0.36	0.36	0.36	0.36	0.36
Avg Monthly Cost	82.34	88.06	50.96	46.91	55.10	53.05	72.87	42.62	46.31	42.54	45.88	68.36
Avg YTD Cost	82.34	85.08	74.02	67.80	65.46	63.36	65.10	62.27	60.74	59.30	58.24	59.13
TSA \$ per NYC MWh	0.00	0.00	0.00	0.04	0.58	0.61	1.52	0.43	0.22	0.01	0.00	0.00
2012	<u>January</u>	<u>February</u>	<u>March</u>	<u>April</u>	<u>May</u>	<u>June</u>	<u>July</u>	<u>August</u>	<u>September</u>	<u>October</u>	<u>November</u>	<u>December</u>
LBMP	44.00	32.45	28.98	28.31	34.68	47.37	63.80	46.24	39.59	39.30	50.16	44.67
NTAC	0.85	0.80	0.68	0.71	0.72	0.77	0.58	0.65	0.57	0.70	0.75	0.83
Reserve	0.35	0.25	0.38	0.32	0.13	0.36	0.36	0.22	0.23	0.29	0.40	0.26
Regulation	0.10	0.08	0.13	0.12	0.09	0.15	0.15	0.12	0.09	0.10	0.11	0.09
NYISO Cost of Operations	0.64	0.64	0.64	0.64	0.64	0.64	0.64	0.64	0.64	0.64	0.64	0.64
Uplift	0.44	0.17	0.00	(0.18)	(0.11)	0.61	0.23	0.22	(0.33)	1.04	0.82	(0.11)
Uplift: Local Reliability Share	0.49	0.27	0.19	0.07	0.25	0.42	0.49	0.83	0.26	0.67	0.72	0.30
Uplift: Statewide Share	(0.05)	(0.10)	(0.19)	(0.25)	(0.36)	0.19	(0.26)	(0.61)	(0.59)	0.38	0.11	(0.41)
Voltage Support and Black Start	0.37	0.37	0.37	0.37	0.37	0.37	0.37	0.37	0.37	0.37	0.37	0.37
Avg Monthly Cost	46.75	34.75	31.19	30.29	36.52	50.27	66.14	48.46	41.17	42.44	53.26	46.74
Avg YTD Cost	46.75	41.12	37.96	36.09	36.18	38.89	44.26	44.91	44.51	44.33	45.14	45.28
TSA \$ per NYC MWh	0.00	0.00	0.00	0.00	1.52	0.45	0.85	0.46	0.59	0.00	0.00	0.00

* Excludes ICAP payments.
Market Mitigation and Analysis
Prepared: 6/5/2014 8:26 AM

Data reflects true-ups thru Dec 2013.

NYISO Dollar Flows - Uplift- OATT Schedule 1 components - Data through May 31, 2014



DAM Contract Balancing amounts are for payments made to generating units to make them whole for being dispatched below their Day-Ahead schedule, as a result of out-of-merit dispatches.

DAM Bid Production Cost Guarantees for Virtual Transactions are included in the chart and are shown from the inception of Virtual Transactions. These values are small and cannot be identified on the chart.

DAM residuals consist of both energy and loss revenue collections and payments. By design, there is a net over collection of revenues due to the difference between the marginal losses paid to generation and the average losses charged to loads.

NYISO Markets Transactions

2014	January	February	March	April	May	June	July	August	September	October	November	December
Day Ahead Market MWh	16,034,264	14,409,515	14,633,570	12,101,747	12,984,458							
DAM LSE Internal LBMP Energy Sales	52%	50%	53%	56%	53%							
DAM External TC LBMP Energy Sales	5%	7%	6%	3%	2%							
DAM Bilateral - Internal Bilaterals	36%	36%	35%	33%	38%							
DAM Bilateral - Import/Non-LBMP Market Bilaterals	5%	5%	5%	6%	5%							
DAM Bilateral - Export/Non-LBMP Market Bilaterals	2%	1%	1%	2%	2%							
DAM Bilateral - Wheel Through Bilaterals	1%	1%	1%	0%	1%							
Balancing Energy Market MWh	-240,397	-285,718	-113,985	58,263	-503,552							
Balancing Energy LSE Internal LBMP Energy Sales	-237%	-208%	-298%	-170%	-134%							
Balancing Energy External TC LBMP Energy Sales	109%	80%	99%	191%	22%							
Balancing Energy Bilateral - Internal Bilaterals	21%	28%	70%	26%	3%							
Balancing Energy Bilateral - Import/Non-LBMP Market Bilaterals	0%	0%	13%	0%	3%							
Balancing Energy Bilateral - Export/Non-LBMP Market Bilaterals	11%	6%	26%	63%	5%							
Balancing Energy Bilateral - Wheel Through Bilaterals	-5%	-6%	-11%	-11%	1%							
Transactions Summary												
LBMP	56%	56%	57%	59%	53%							
Internal Bilaterals	37%	37%	36%	33%	39%							
Import Bilaterals	5%	5%	5%	6%	5%							
Export Bilaterals	2%	1%	2%	2%	2%							
Wheels Through	1%	1%	1%	0%	1%							
Market Share of Total Load												
Day Ahead Market	101.5%	102.0%	100.8%	99.5%	104.0%							
Balancing Energy +	-1.5%	-2.0%	-0.8%	0.5%	-4.0%							
Total MWh	15,793,868	14,123,796	14,519,586	12,160,010	12,480,906							
Average Daily Energy Sendout/Month GWh	475	460	440	390	391							

2013	January	February	March	April	May	June	July	August	September	October	November	December
Day Ahead Market MWh	15,140,096	14,116,189	14,250,091	12,963,905	13,451,310	14,872,971	17,974,314	16,090,437	14,021,472	13,411,499	13,692,854	15,406,816
DAM LSE Internal LBMP Energy Sales	56%	55%	56%	57%	56%	57%	59%	57%	55%	51%	52%	52%
DAM External TC LBMP Energy Sales	4%	6%	3%	3%	1%	1%	1%	0%	0%	0%	3%	6%
DAM Bilateral - Internal Bilaterals	38%	37%	38%	37%	37%	36%	33%	36%	38%	41%	40%	36%
DAM Bilateral - Import/Non-LBMP Market Bilaterals	0%	0%	0%	0%	3%	4%	5%	5%	4%	5%	4%	4%
DAM Bilateral - Export/Non-LBMP Market Bilaterals	1%	1%	1%	1%	1%	1%	1%	1%	1%	1%	2%	1%
DAM Bilateral - Wheel Through Bilaterals	1%	1%	1%	1%	1%	1%	1%	1%	1%	1%	1%	1%
Balancing Energy Market MWh	-471,167	-648,574	-501,253	-525,278	-501,948	-669,315	-294,946	-915,232	-759,051	-694,291	-579,298	-531,521
Balancing Energy LSE Internal LBMP Energy Sales	-131%	-117%	-127%	-123%	-133%	-115%	-189%	-113%	-120%	-122%	-134%	-130%
Balancing Energy External TC LBMP Energy Sales	33%	20%	23%	21%	35%	16%	78%	9%	11%	13%	23%	16%
Balancing Energy Bilateral - Internal Bilaterals	4%	10%	11%	3%	5%	4%	11%	3%	6%	5%	4%	13%
Balancing Energy Bilateral - Import/Non-LBMP Market Bilaterals	0%	0%	0%	0%	0%	1%	4%	0%	0%	0%	0%	0%
Balancing Energy Bilateral - Export/Non-LBMP Market Bilaterals	5%	3%	4%	5%	4%	2%	3%	1%	2%	3%	7%	5%
Balancing Energy Bilateral - Wheel Through Bilaterals	-11%	-16%	-11%	-6%	-11%	-9%	-7%	0%	1%	0%	1%	-4%
Transactions Summary												
LBMP	59%	59%	58%	59%	55%	56%	59%	54%	53%	49%	52%	56%
Internal Bilaterals	39%	39%	40%	39%	39%	38%	34%	39%	41%	43%	41%	38%
Import Bilaterals	0%	0%	0%	0%	4%	4%	5%	5%	4%	6%	4%	4%
Export Bilaterals	1%	1%	2%	2%	2%	1%	1%	1%	2%	2%	2%	2%
Wheels Through	1%	0%	1%	1%	0%	1%	1%	1%	1%	1%	1%	1%
Market Share of Total Load												
Day Ahead Market	103.2%	104.8%	103.6%	104.2%	103.9%	104.7%	101.7%	106.0%	105.7%	105.5%	104.4%	103.6%
Balancing Energy +	-3.2%	-4.8%	-3.6%	-4.2%	-3.9%	-4.7%	-1.7%	-6.0%	-5.7%	-5.5%	-4.4%	-3.6%
Total MWh	14,668,929	13,467,615	13,748,838	12,438,627	12,949,362	14,203,656	17,679,368	15,175,205	13,262,421	12,717,208	13,113,556	14,875,295
Average Daily Energy Sendout/Month GWh	453	453	429	398	407	469	561	485	438	407	421	450

+ Balancing Energy: Load(MW) purchased at Real Time LBMP.

* The signs for the detail section intuitively reflect the direction of power flow eliminating the use of double negatives when Balancing Energy is negative.

Notes: Percent totals may not equal 100% due to rounding.
Virtual Transactions are not reflected in this chart.

NYISO Markets 2014 Energy Statistics

	<u>January</u>	<u>February</u>	<u>March</u>	<u>April</u>	<u>May</u>	<u>June</u>	<u>July</u>	<u>August</u>	<u>September</u>	<u>October</u>	<u>November</u>	<u>December</u>
<u>DAY AHEAD LBMP</u>												
Price *	\$155.11	\$110.69	\$97.07	\$44.16	\$36.61							
Standard Deviation	\$121.52	\$50.86	\$59.89	\$8.90	\$10.99							
Load Weighted Price **	\$164.06	\$114.77	\$100.81	\$45.19	\$38.05							
<u>RTC LBMP</u>												
Price *	\$138.41	\$110.71	\$94.71	\$44.00	\$33.16							
Standard Deviation	\$125.42	\$72.22	\$97.72	\$27.44	\$17.51							
Load Weighted Price **	\$147.06	\$115.31	\$98.80	\$45.48	\$34.63							
<u>REAL TIME LBMP</u>												
Price *	\$137.90	\$111.51	\$93.37	\$42.79	\$34.06							
Standard Deviation	\$122.32	\$70.35	\$89.05	\$19.38	\$17.15							
Load Weighted Price **	\$147.77	\$115.80	\$97.58	\$43.97	\$35.46							
Average Daily Energy Sendout/Month GWh	475	460	440	390	391							

NYISO Markets 2013 Energy Statistics

	<u>January</u>	<u>February</u>	<u>March</u>	<u>April</u>	<u>May</u>	<u>June</u>	<u>July</u>	<u>August</u>	<u>September</u>	<u>October</u>	<u>November</u>	<u>December</u>
<u>DAY AHEAD LBMP</u>												
Price *	\$69.17	\$75.82	\$45.97	\$42.21	\$45.87	\$42.66	\$56.90	\$37.19	\$38.32	\$36.15	\$39.18	\$57.72
Standard Deviation	\$47.21	\$29.98	\$9.40	\$7.84	\$18.77	\$17.98	\$37.12	\$11.85	\$15.21	\$9.15	\$13.56	\$28.61
Load Weighted Price **	\$72.17	\$77.95	\$46.85	\$43.13	\$48.52	\$45.32	\$61.77	\$39.00	\$40.47	\$37.37	\$40.58	\$60.27
<u>RTC LBMP</u>												
Price *	\$73.69	\$64.15	\$45.75	\$40.50	\$39.51	\$42.00	\$55.41	\$35.90	\$39.06	\$34.08	\$39.57	\$54.53
Standard Deviation	\$88.27	\$36.96	\$22.62	\$14.79	\$24.44	\$30.96	\$58.54	\$18.35	\$60.70	\$17.38	\$30.77	\$41.66
Load Weighted Price **	\$77.52	\$66.07	\$46.79	\$41.52	\$42.14	\$44.70	\$61.64	\$37.65	\$43.41	\$35.49	\$41.56	\$56.95
<u>REAL TIME LBMP</u>												
Price *	\$76.47	\$64.87	\$45.01	\$42.74	\$42.32	\$43.93	\$65.57	\$37.03	\$39.02	\$36.02	\$37.28	\$52.49
Standard Deviation	\$83.80	\$38.96	\$16.27	\$15.96	\$26.99	\$34.72	\$89.92	\$20.11	\$36.85	\$19.07	\$25.69	\$34.01
Load Weighted Price **	\$81.71	\$66.83	\$45.94	\$43.73	\$45.50	\$47.00	\$76.32	\$38.92	\$43.28	\$37.47	\$38.75	\$54.60
Average Daily Energy Sendout/Month GWh	453	453	429	398	407	469	561	485	438	407	421	450

* Average zonal load weighted prices.

** Average zonal load weighted prices, load weighted in each hour.

NYISO Monthly Average Internal LBMPs 2013- 2014

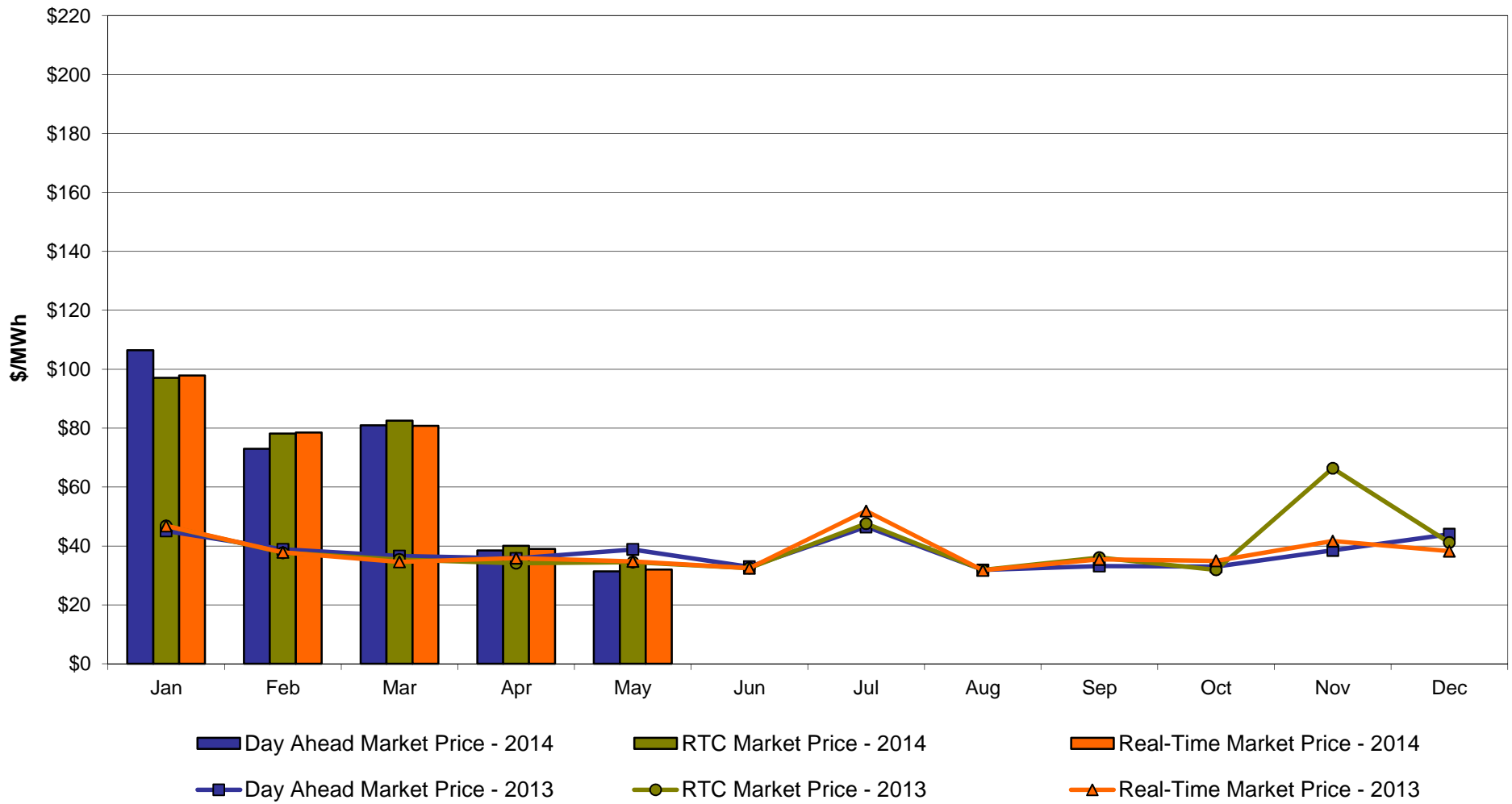


May 2014 Zonal LBMP Statistics for NYISO (\$/MWh)

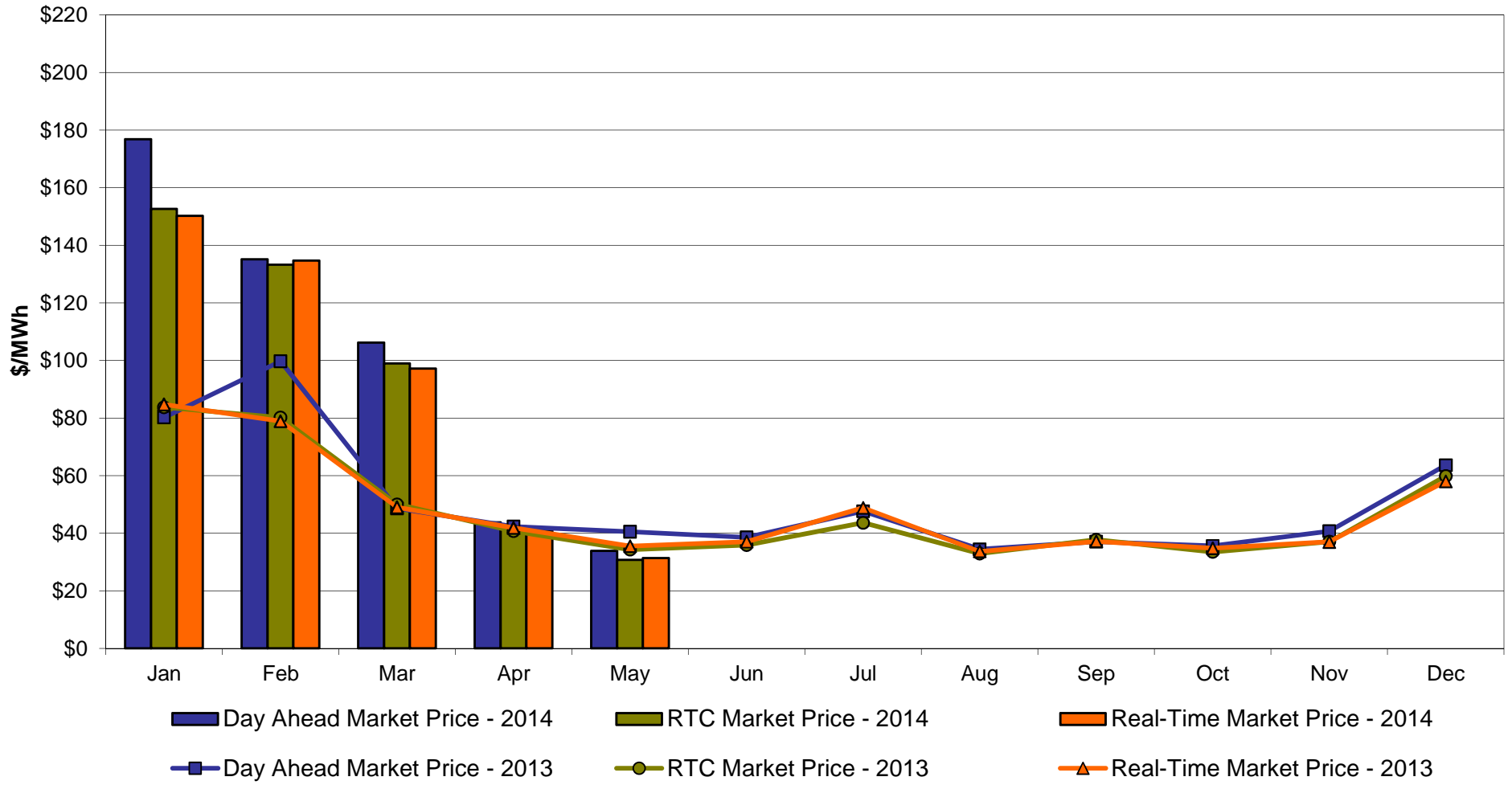
	<u>WEST</u> <u>Zone A</u>	<u>GENESEE</u> <u>Zone B</u>	<u>NORTH</u> <u>Zone D</u>	<u>CENTRAL</u> <u>Zone C</u>	<u>MOHAWK</u> <u>VALLEY</u> <u>Zone E</u>	<u>CAPITAL</u> <u>Zone F</u>	<u>HUDSON</u> <u>VALLEY</u> <u>Zone G</u>	<u>MILLWOOD</u> <u>Zone H</u>	<u>DUNWOODIE</u> <u>Zone I</u>	<u>NEW YORK</u> <u>CITY</u> <u>Zone J</u>	<u>LONG</u> <u>ISLAND</u> <u>Zone K</u>
DAY AHEAD LBMP											
Unweighted Price *	31.35	31.73	29.40	32.23	32.32	33.91	36.57	36.87	36.93	37.31	48.89
Standard Deviation	8.53	8.32	7.40	8.52	8.55	8.69	10.44	10.73	10.77	10.90	26.58
RTC LBMP											
Unweighted Price *	34.20	29.47	26.59	30.48	29.71	30.76	32.79	32.93	32.94	33.33	39.94
Standard Deviation	51.33	15.36	10.98	17.08	15.70	15.58	17.00	17.07	17.07	17.13	29.73
REAL TIME LBMP											
Unweighted Price *	31.98	29.82	27.40	30.72	30.18	31.35	33.29	33.42	33.45	33.87	45.59
Standard Deviation	35.60	13.61	12.13	14.47	13.52	13.32	15.27	15.48	15.50	15.54	56.82
	<u>ONTARIO</u> <u>IESO</u> <u>Zone O</u>	<u>HYDRO</u> <u>QUEBEC</u> <u>(Wheel)</u> <u>Zone M</u>	<u>HYDRO</u> <u>QUEBEC</u> <u>(Import/Export)</u> <u>Zone M</u>	<u>PJM</u> <u>Zone P</u>	<u>NEW</u> <u>ENGLAND</u> <u>Zone N</u>	<u>CROSS</u> <u>SOUND</u> <u>CABLE</u> <u>Controllable</u> <u>Line</u>	<u>NORTHPORT-</u> <u>NORWALK</u> <u>Controllable</u> <u>Line</u>	<u>NEPTUNE</u> <u>Controllable</u> <u>Line</u>	<u>LINDEN VFT</u> <u>Controllable</u> <u>Line</u>	<u>HUDSON</u> <u>Controllable</u> <u>Line</u>	<u>Dennison</u> <u>Controllable</u> <u>Line</u>
DAY AHEAD LBMP											
Unweighted Price *	30.01	30.58	30.56	34.38	35.91	43.73	40.74	42.18	37.08	37.21	29.10
Standard Deviation	7.62	7.78	7.76	9.47	9.28	18.71	11.13	17.56	10.60	10.91	7.19
RTC LBMP											
Unweighted Price *	25.76	27.02	27.02	30.78	31.36	37.25	35.30	36.09	32.76	32.76	26.09
Standard Deviation	15.31	14.31	14.31	16.80	16.69	30.11	45.73	29.81	17.26	17.25	13.87
REAL TIME LBMP											
Unweighted Price *	25.71	28.53	28.53	32.54	35.31	41.78	36.78	41.20	34.27	34.28	27.12
Standard Deviation	16.38	18.71	18.71	20.00	23.02	54.54	60.72	55.98	20.61	20.62	12.13

* Straight LBMP averages

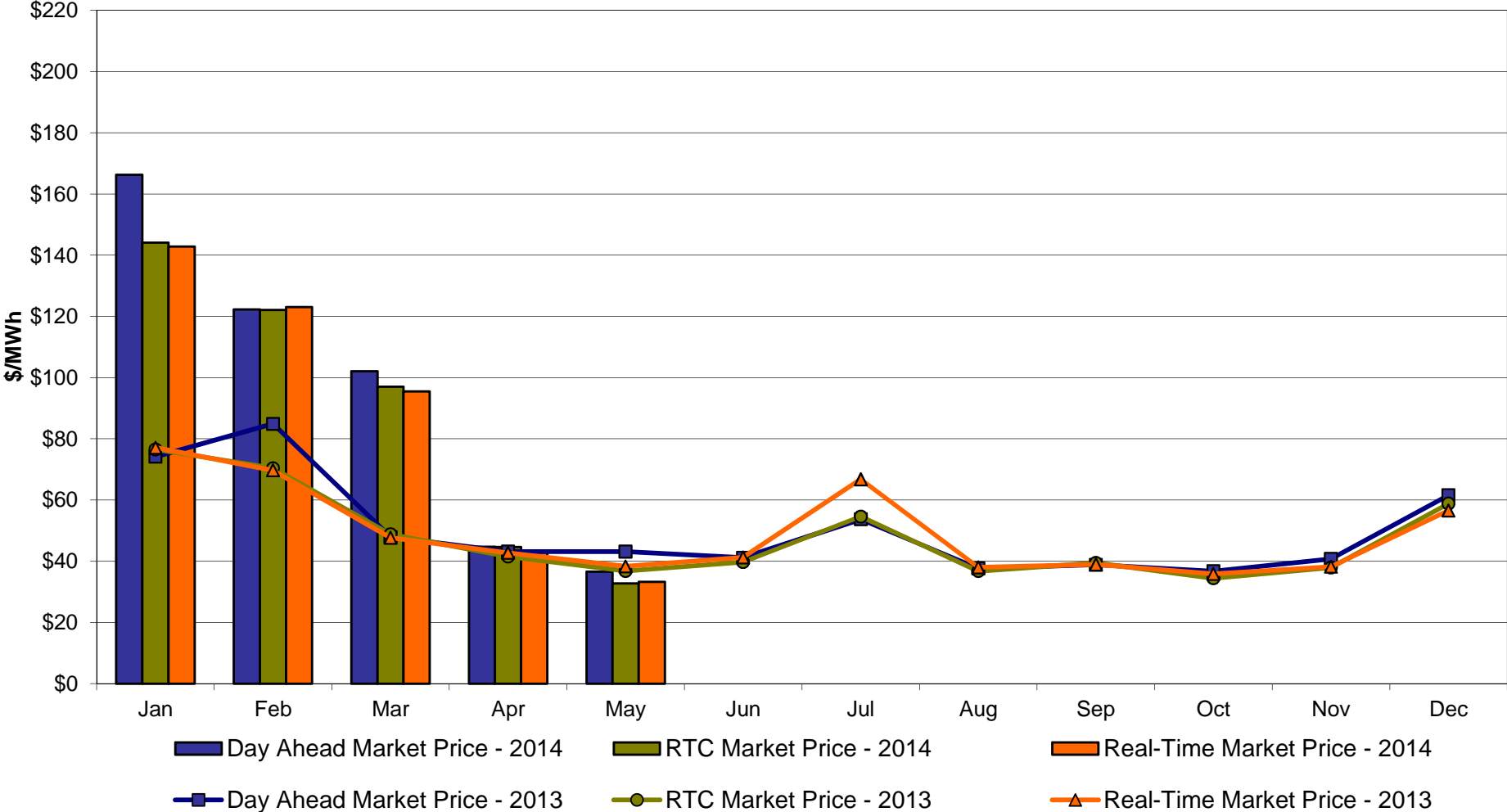
West Zone A
Monthly Average LBMP Prices 2013 - 2014



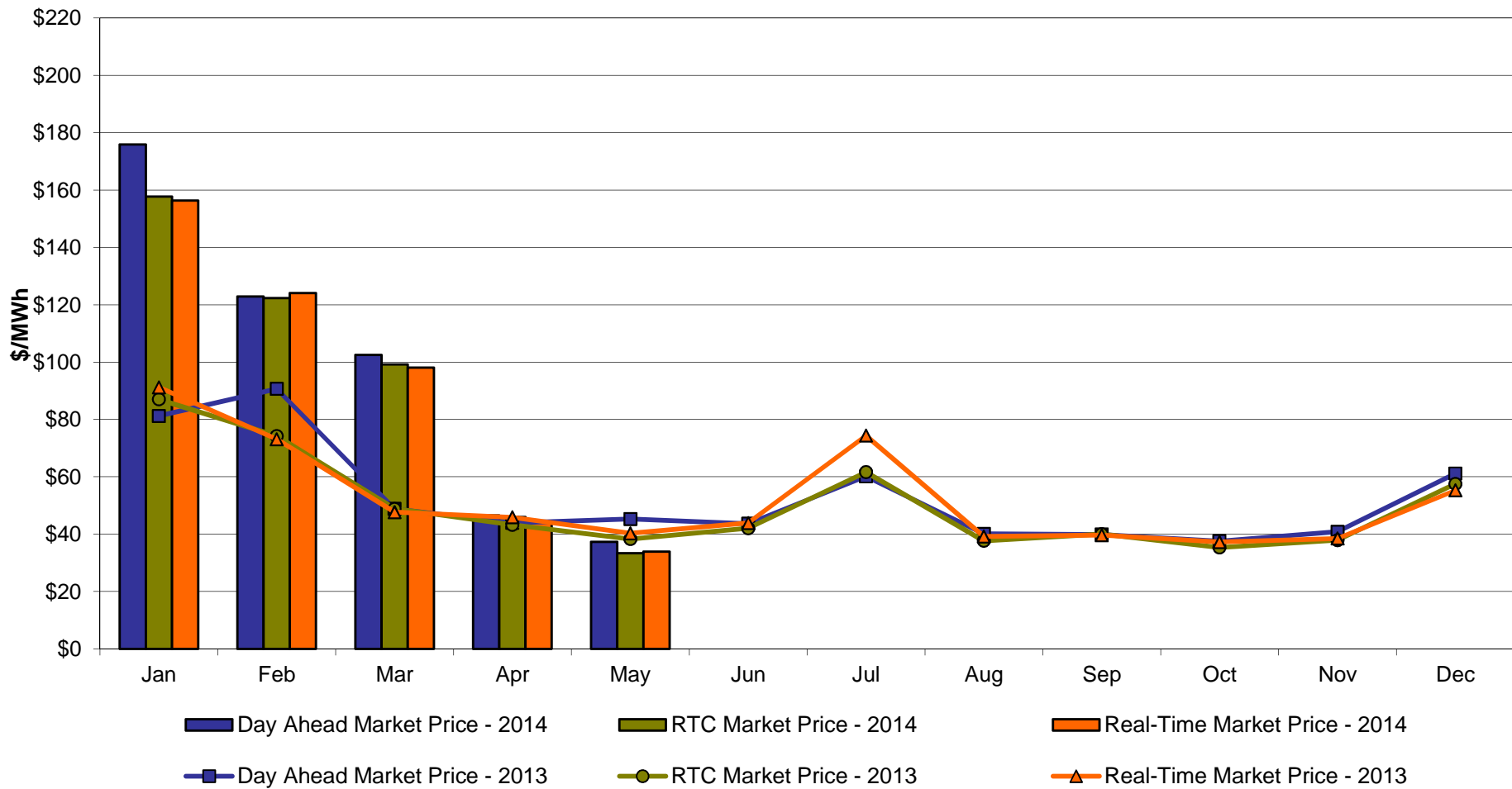
Capital Zone F Monthly Average LBMP Prices 2013 - 2014



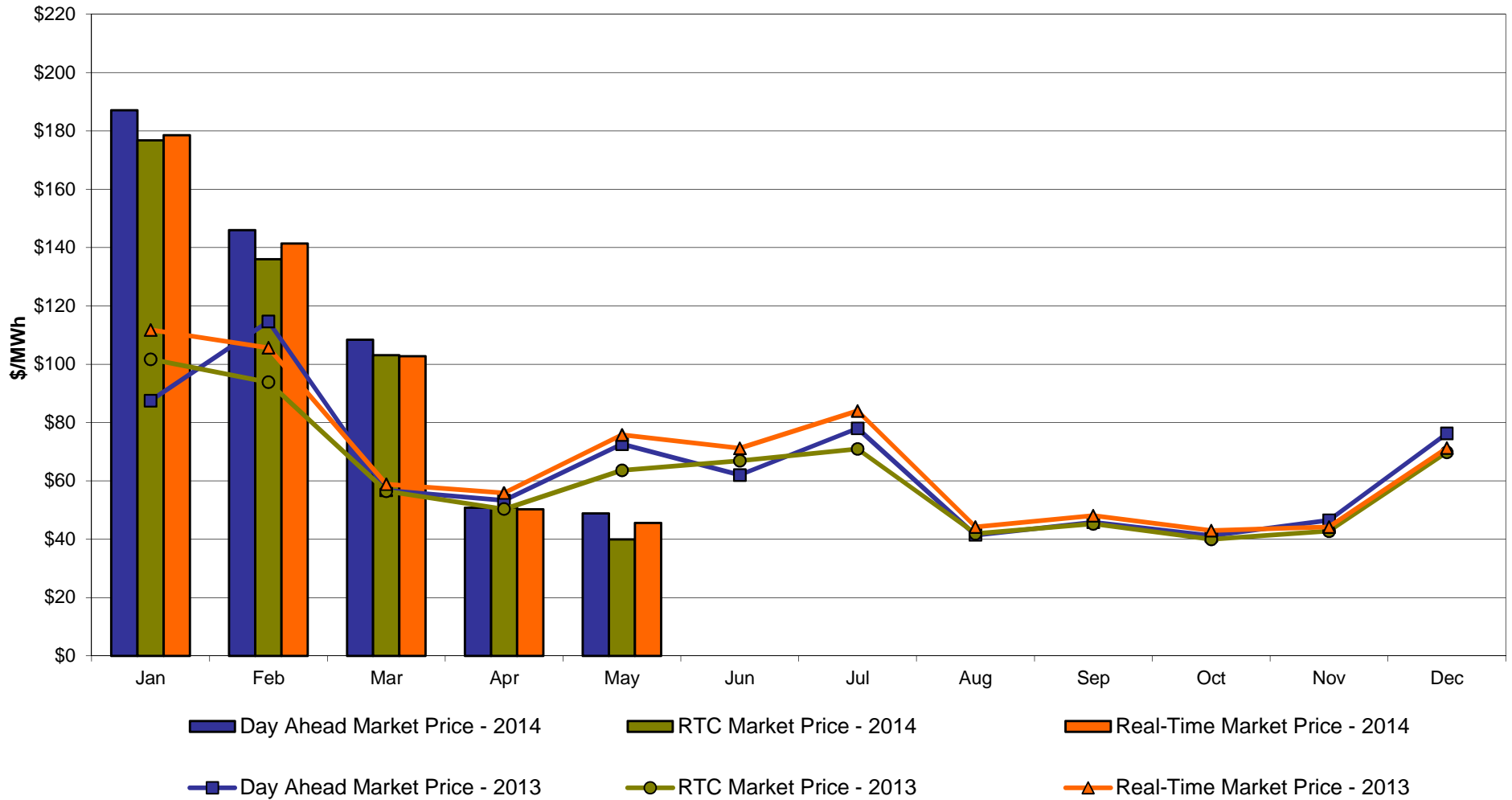
Hudson Valley Zone G Monthly Average LBMP Prices 2013 - 2014



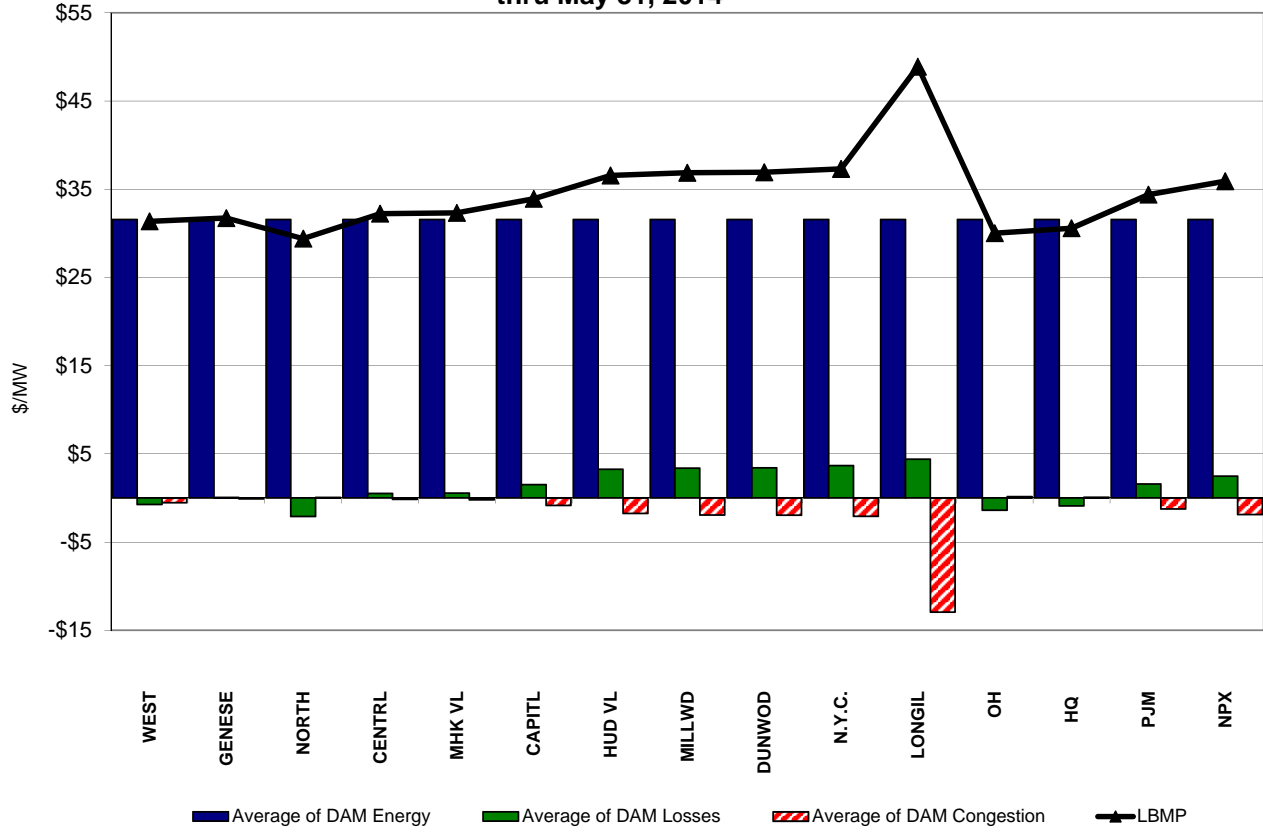
NYC Zone J Monthly Average LBMP Prices 2013 - 2014



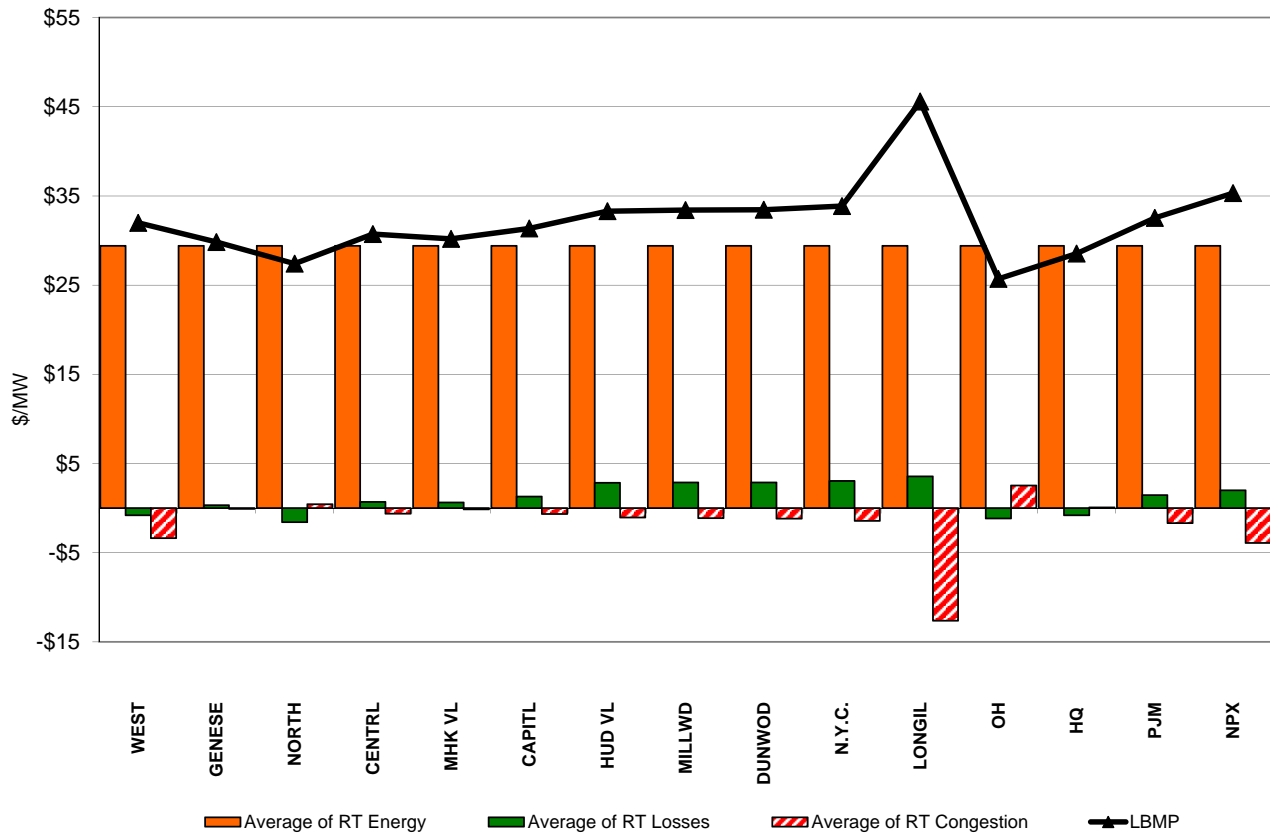
Long Island Zone K Monthly Average LBMP Prices 2013 - 2014



**DAM Zonal Unweighted Monthly Average LBMP Components
thru May 31, 2014**

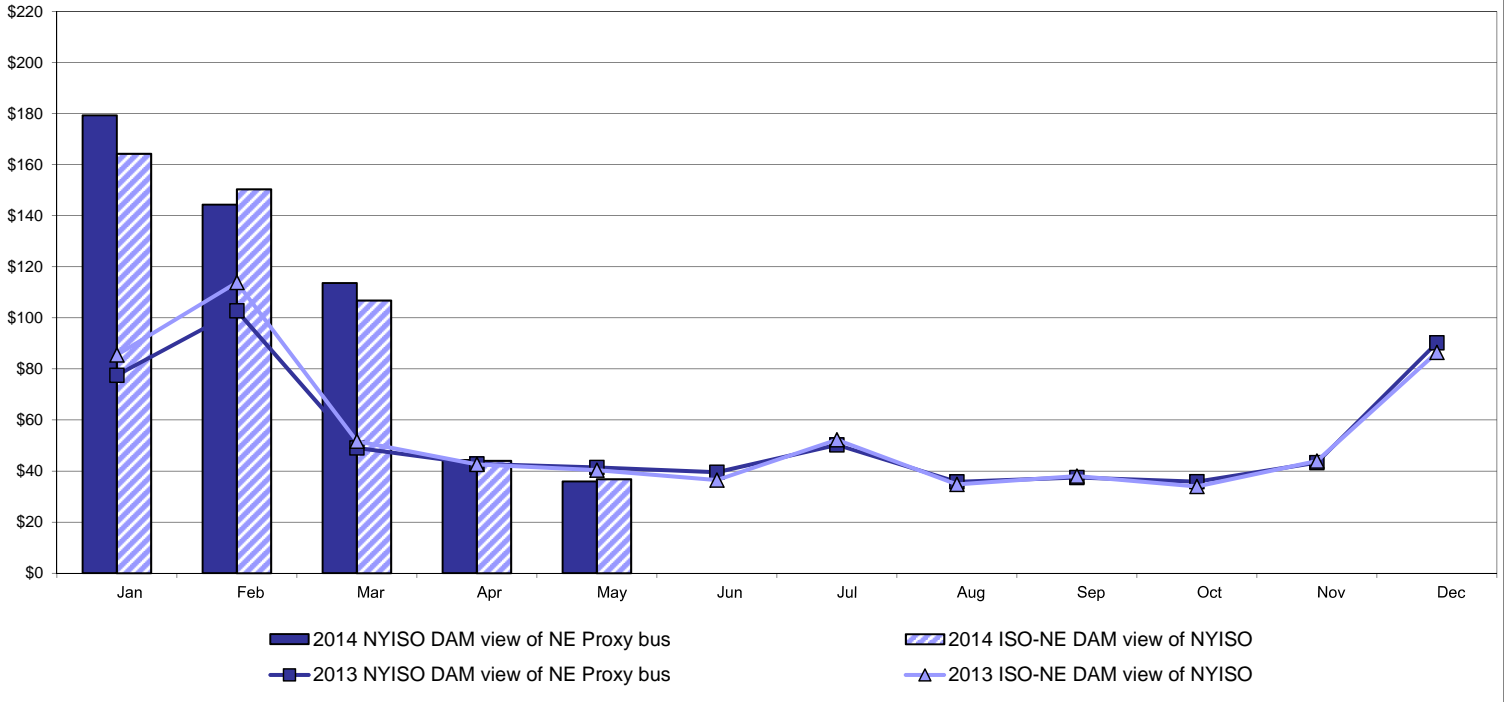


**RT Zonal Unweighted Monthly Average LBMP Components
thru May 31, 2014**

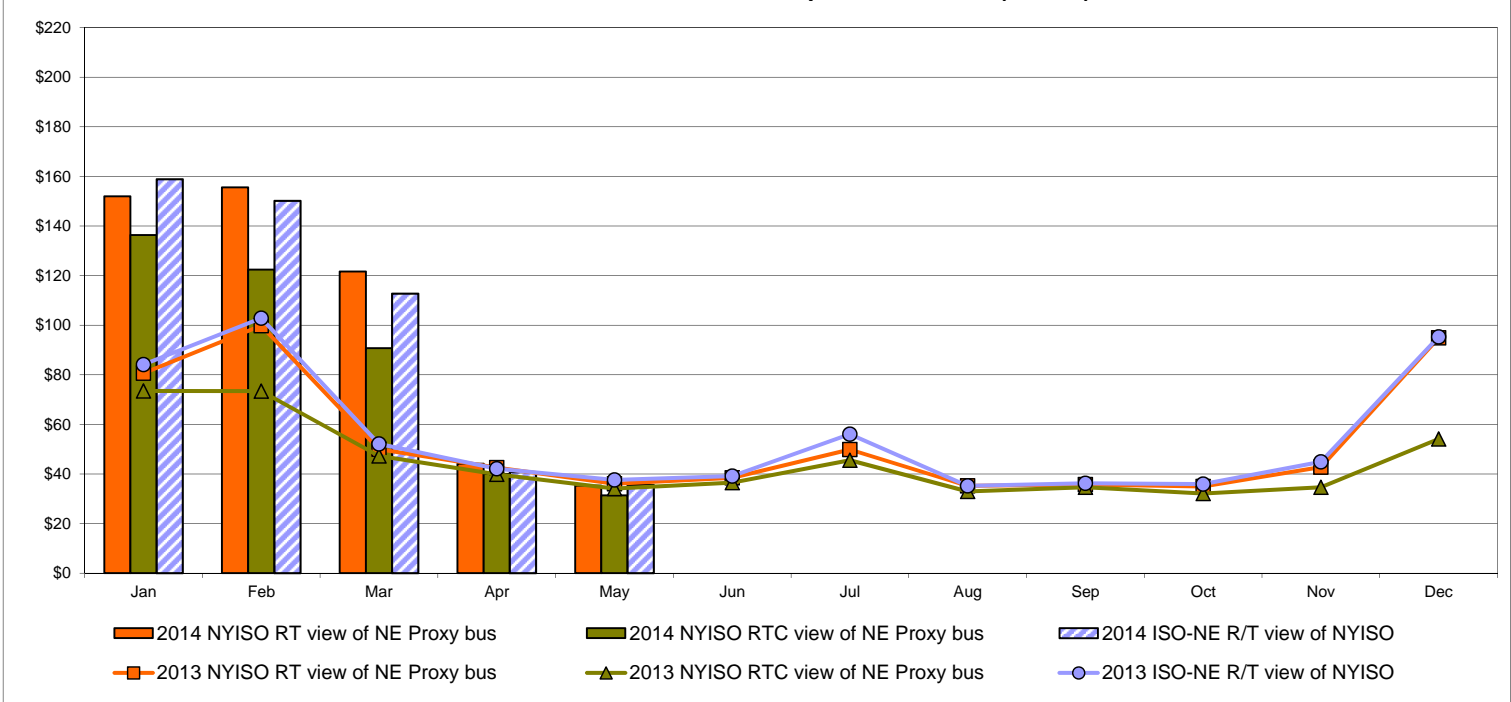


External Comparison ISO-New England

Day Ahead Market External Zone Comparison: ISO-NE (\$/MWh)

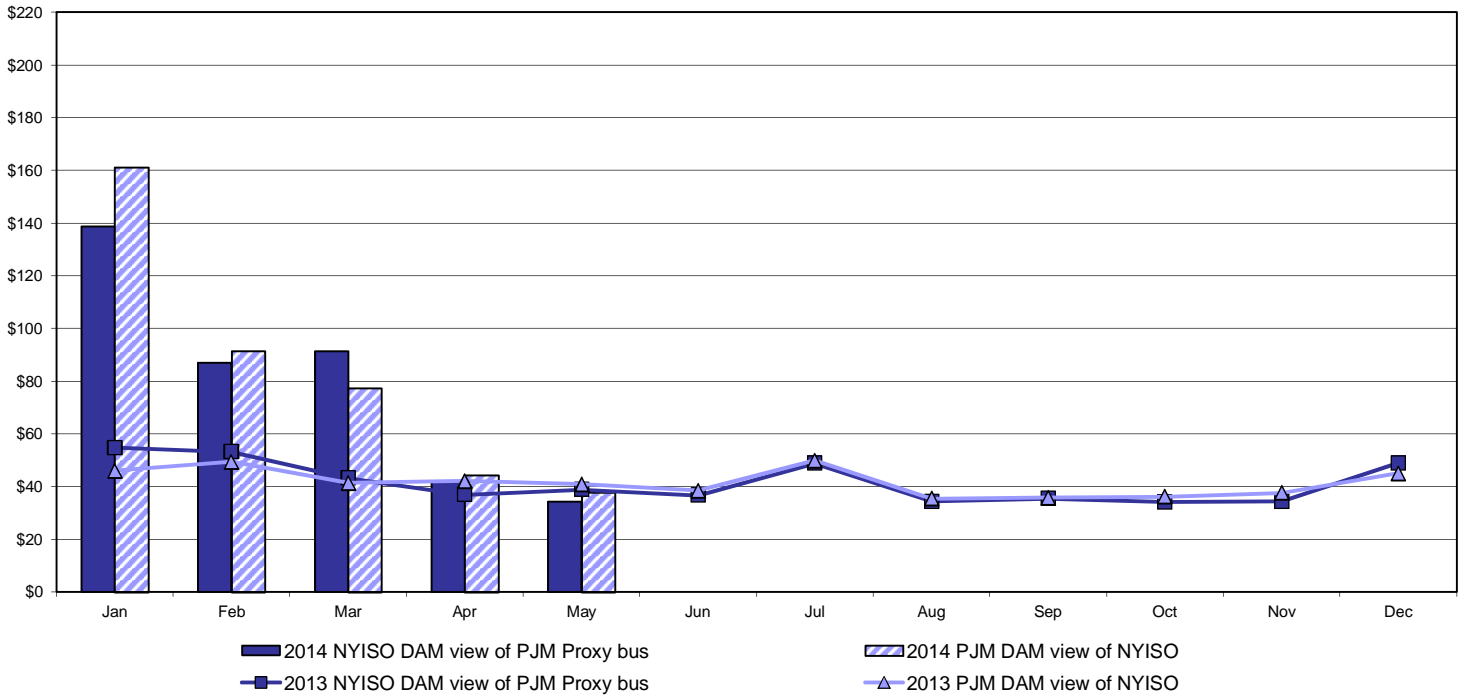


Real Time Market External Zone Comparison: ISO-NE (\$/MWh)

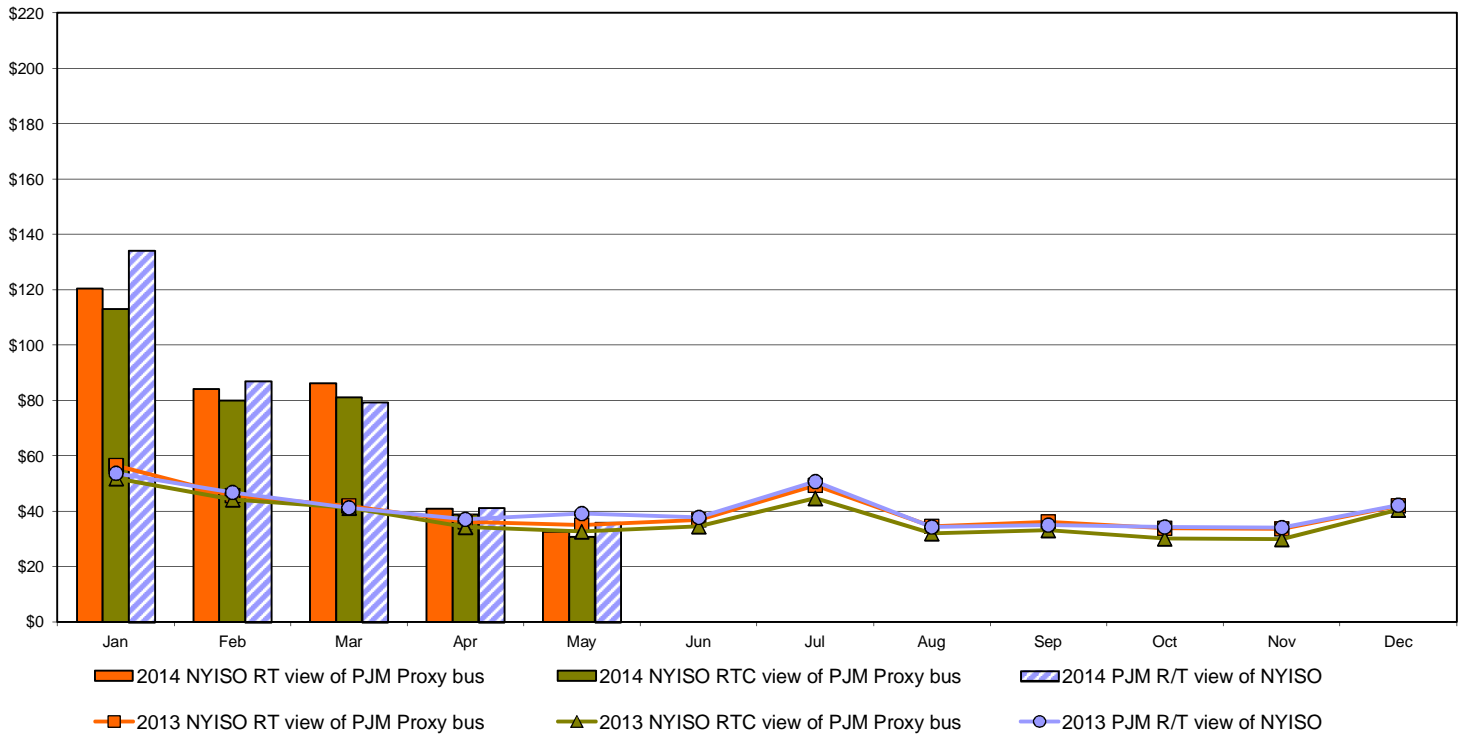


External Comparison PJM

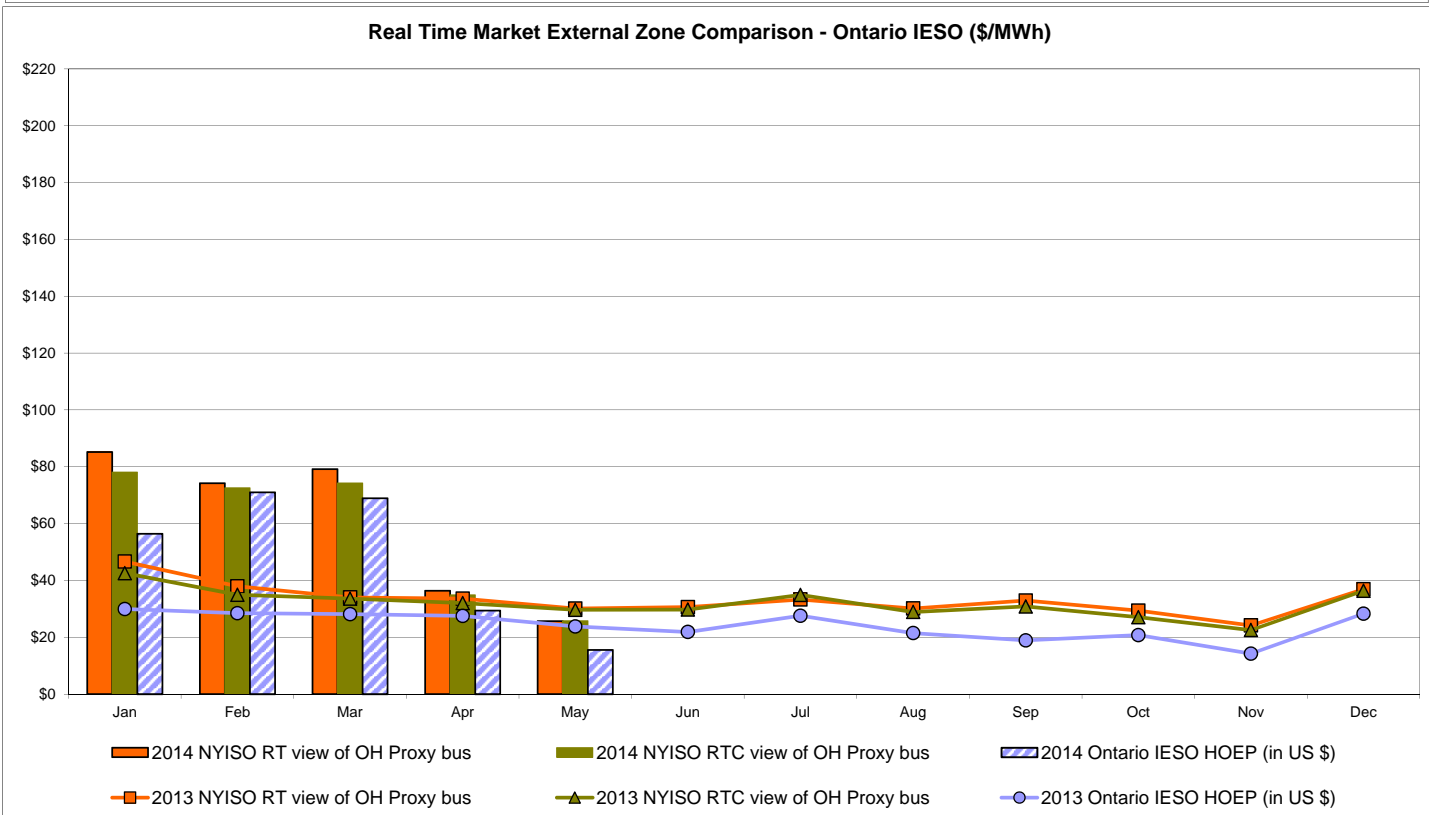
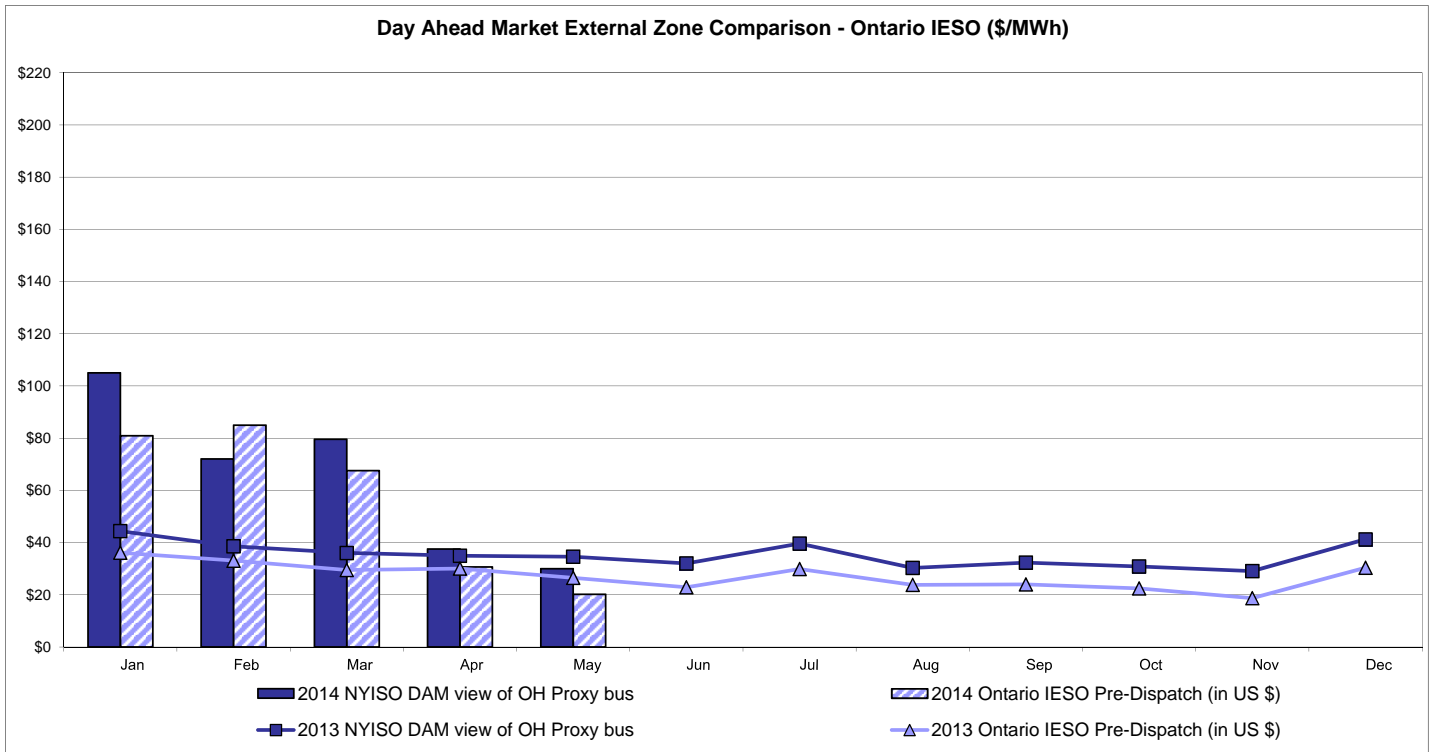
Day Ahead Market External Zone Comparison - PJM (\$/MWh)



Real Time Market External Zone Comparison - PJM (\$/MWh)

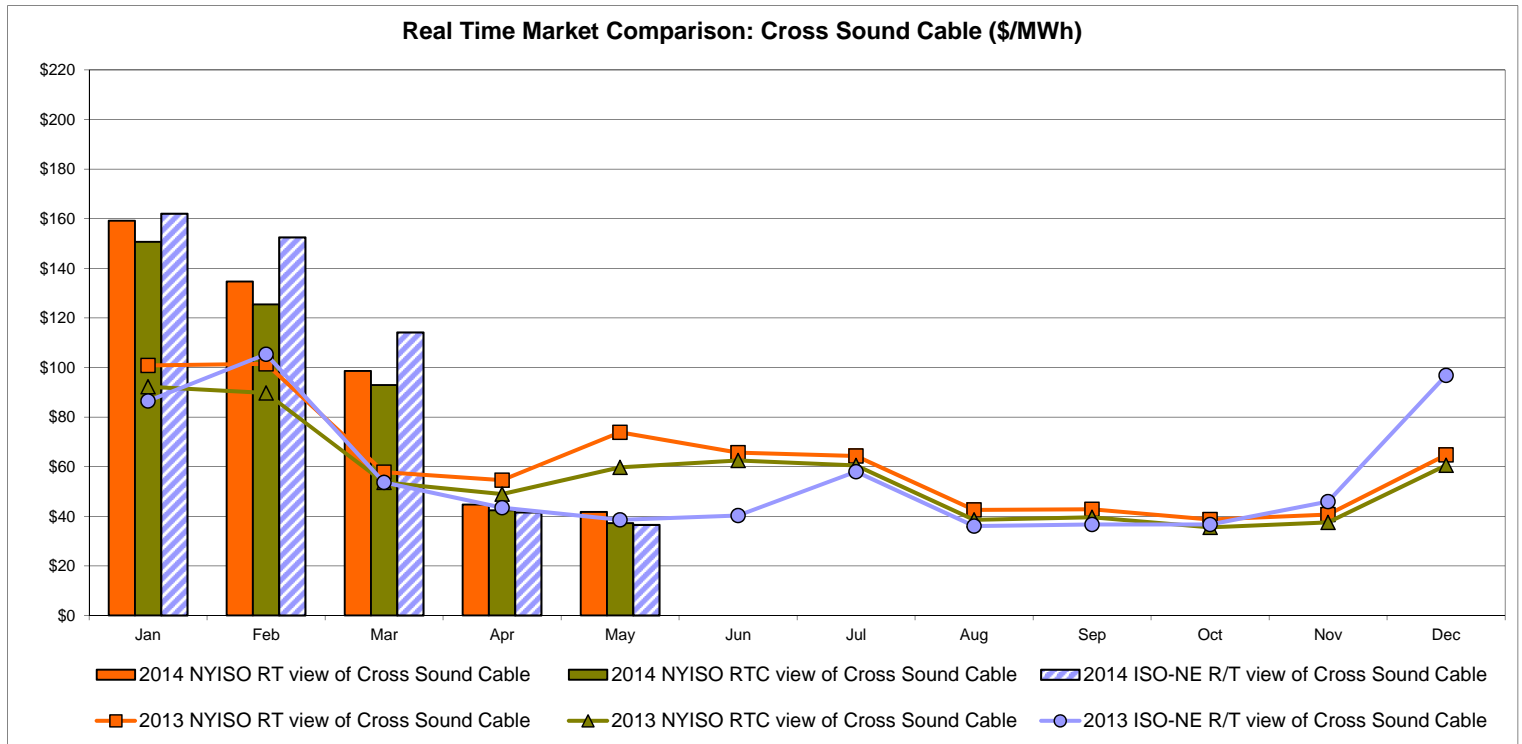
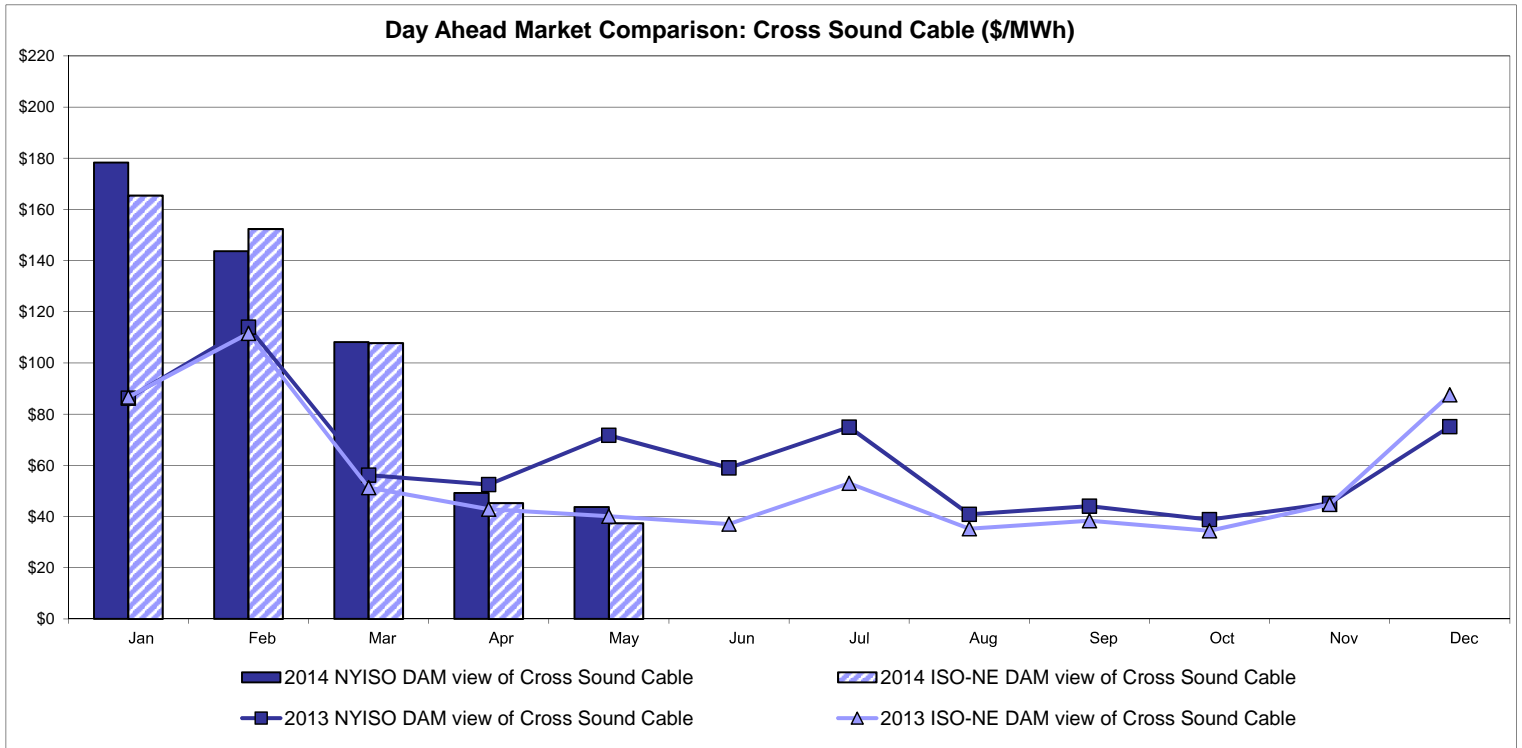


External Comparison Ontario IESO



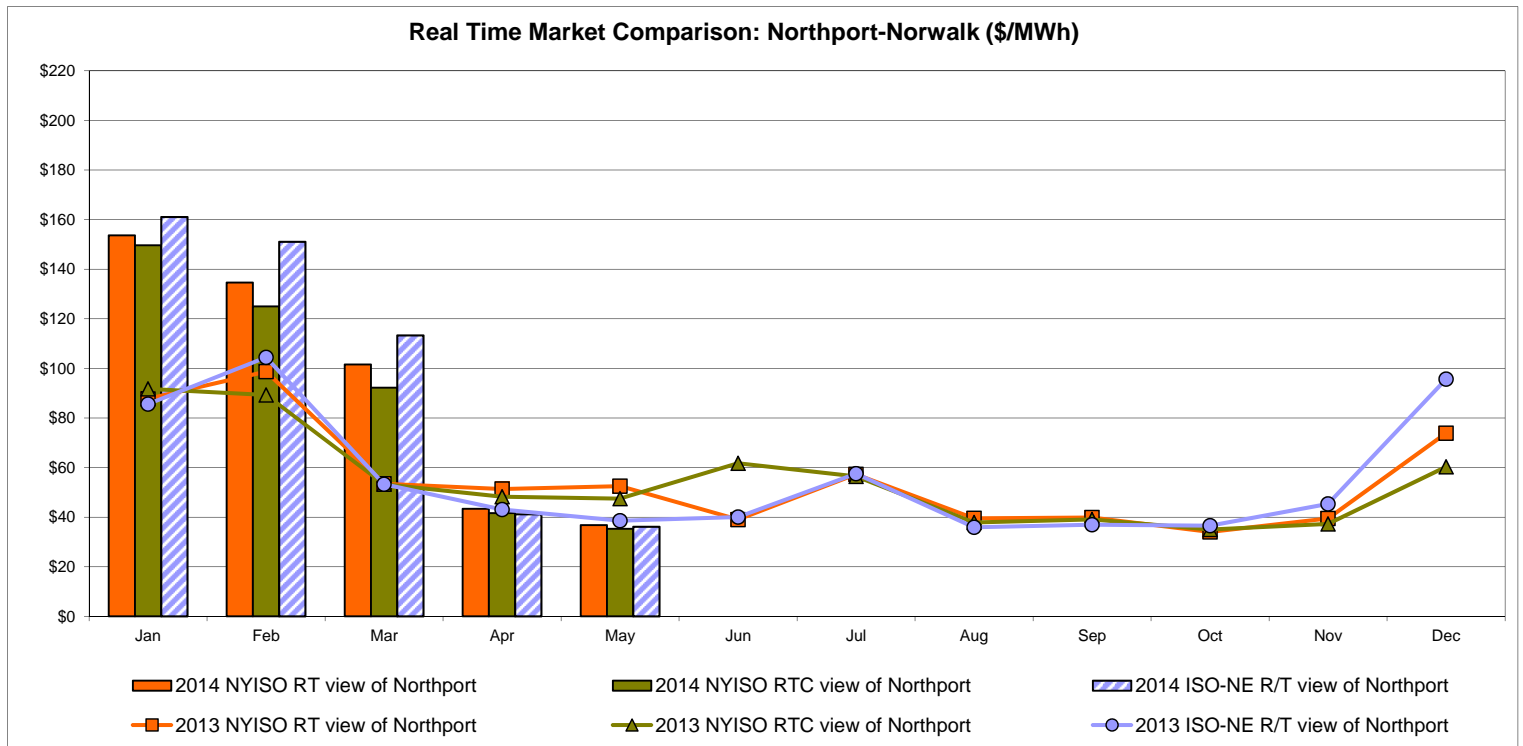
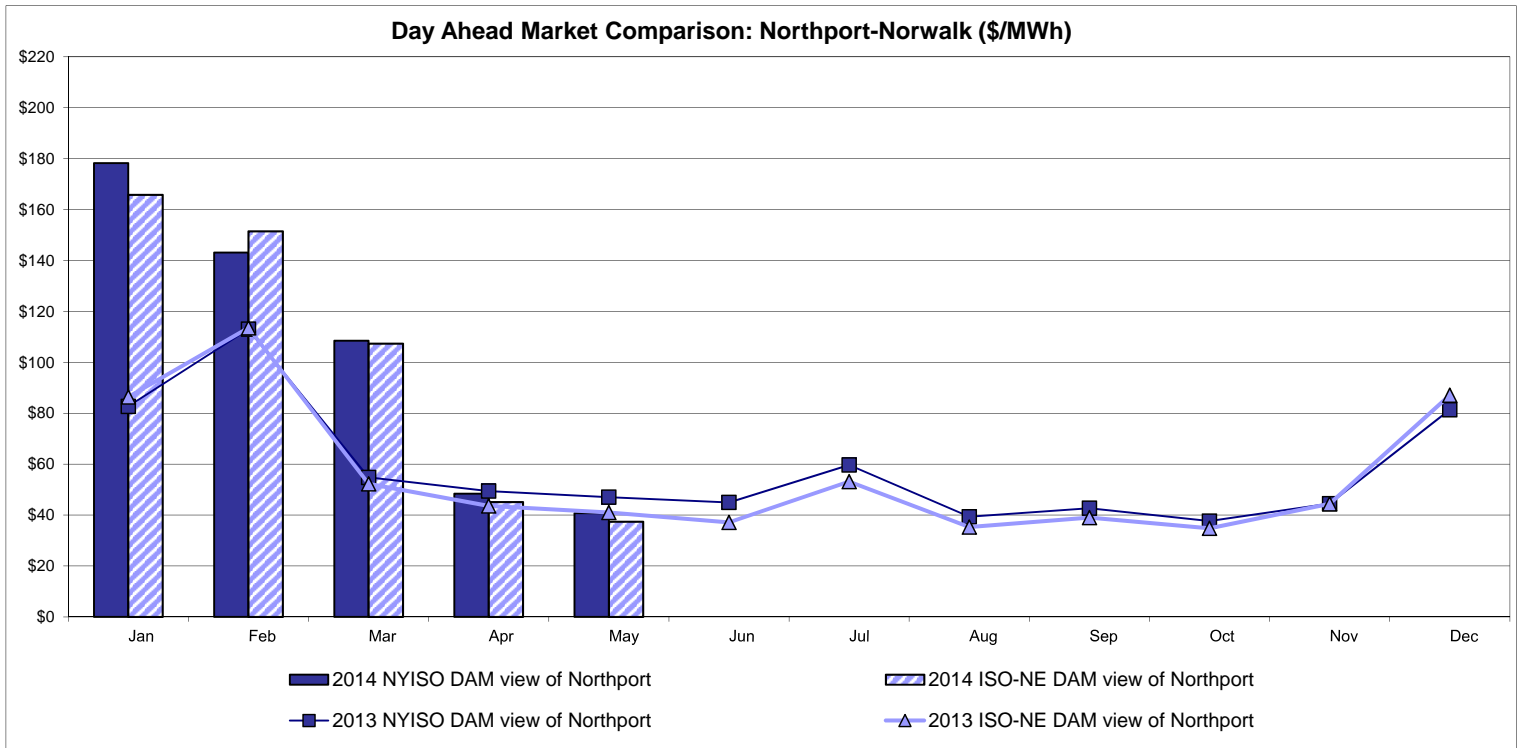
Notes: Exchange factor used for May 2014 was 0.9180 to US \$
 HOEP: Hourly Ontario Energy Price
 Pre-Dispatch: Projected Energy Price

External Controllable Line: Cross Sound Cable (New England)



Note:
 ISO-NE Forecast is an advisory posting @ 18:00 day before.
 The DAM and R/T prices at the Shorham 13899 interface are used for ISO-NE.
 The DAM and R/T prices at the CSC interface are used for NYISO.

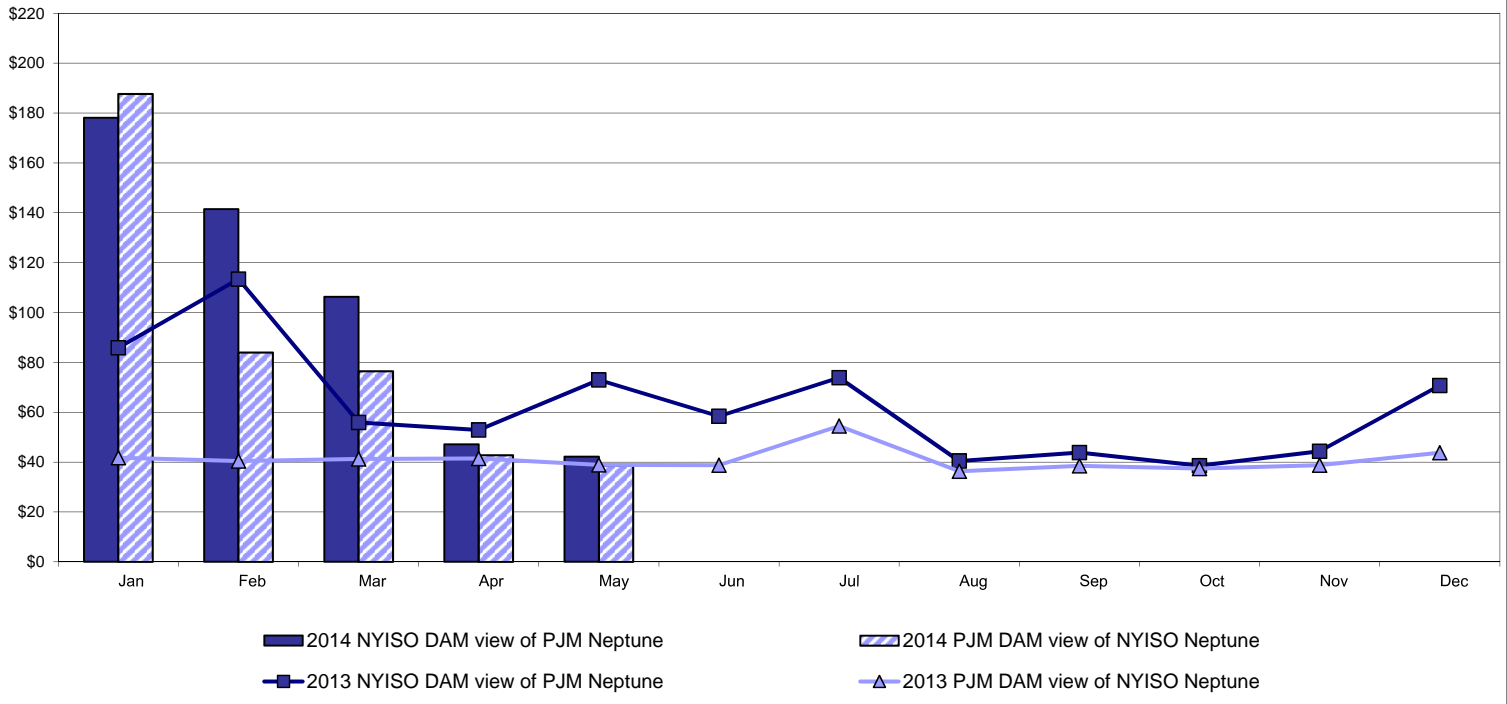
External Controllable Line: Northport - Norwalk (New England)



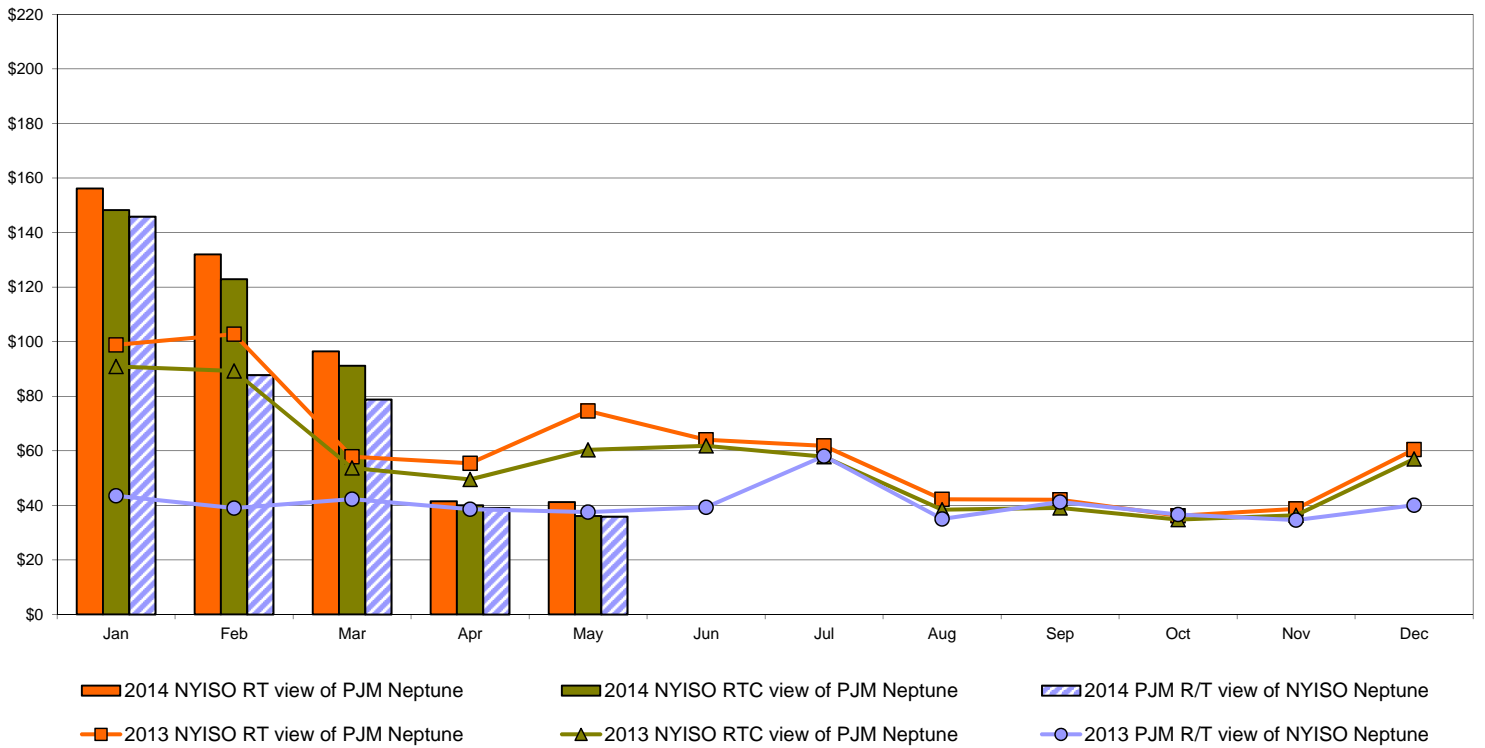
Note:
 ISO-NE Forecast is an advisory posting @ 18:00 day before.
 The DAM and R/T prices at the Northport 138 interface are used for ISO-NE.
 The DAM and R/T prices at the 1385 interface are used for NYISO.

External Controllable Line: Neptune (PJM)

Day Ahead Market Comparison: Neptune (\$/MWh)

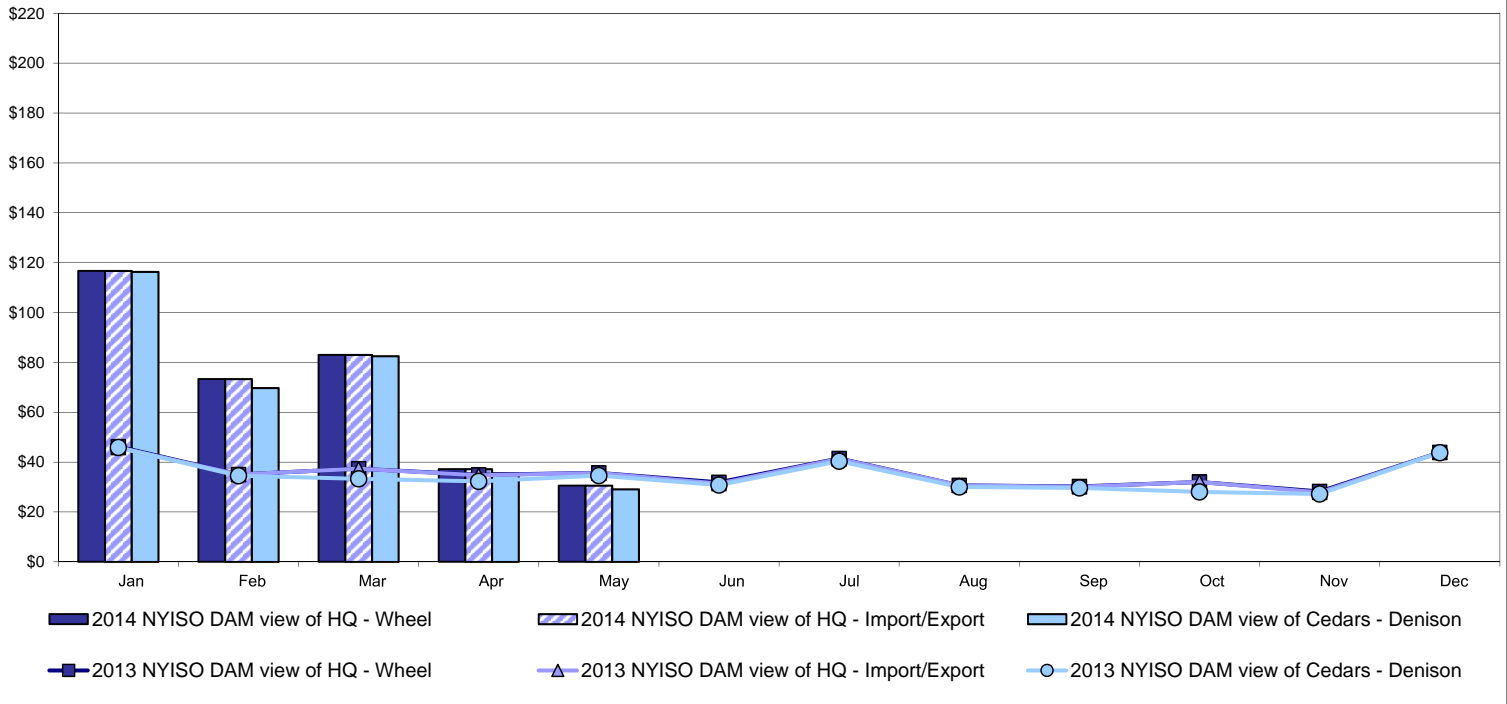


Real Time Market Comparison: Neptune (\$/MWh)

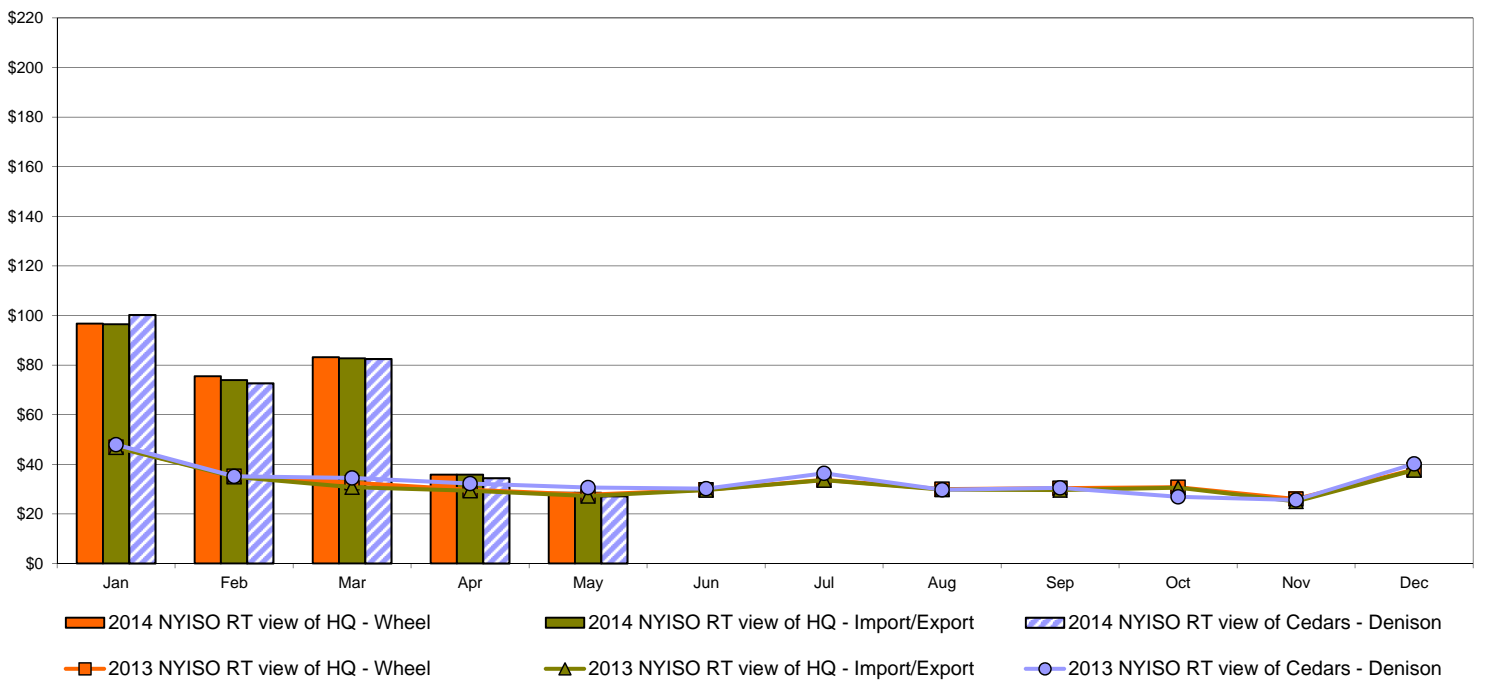


External Comparison Hydro-Quebec

Day Ahead Market External Zone Comparison - HQ (\$/MWh)

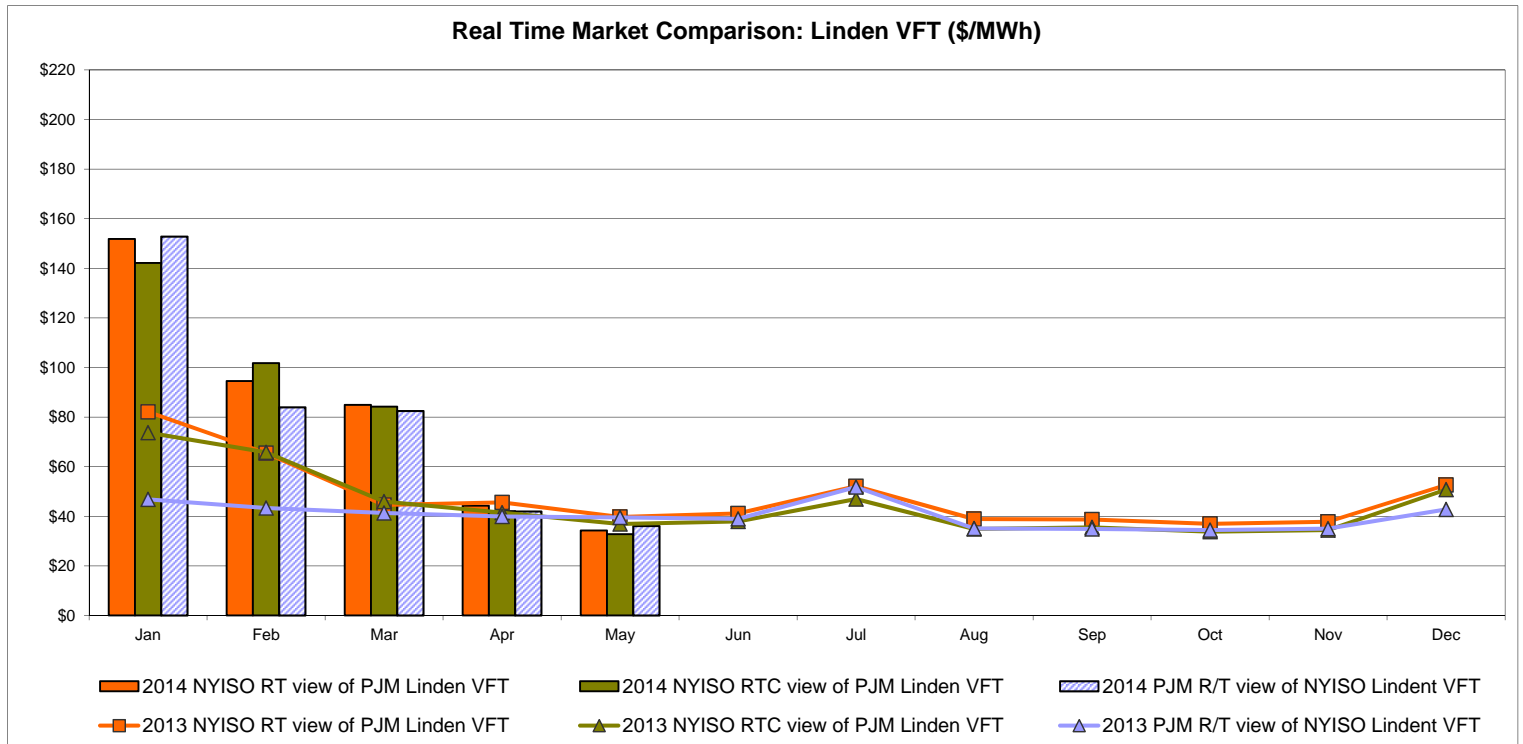
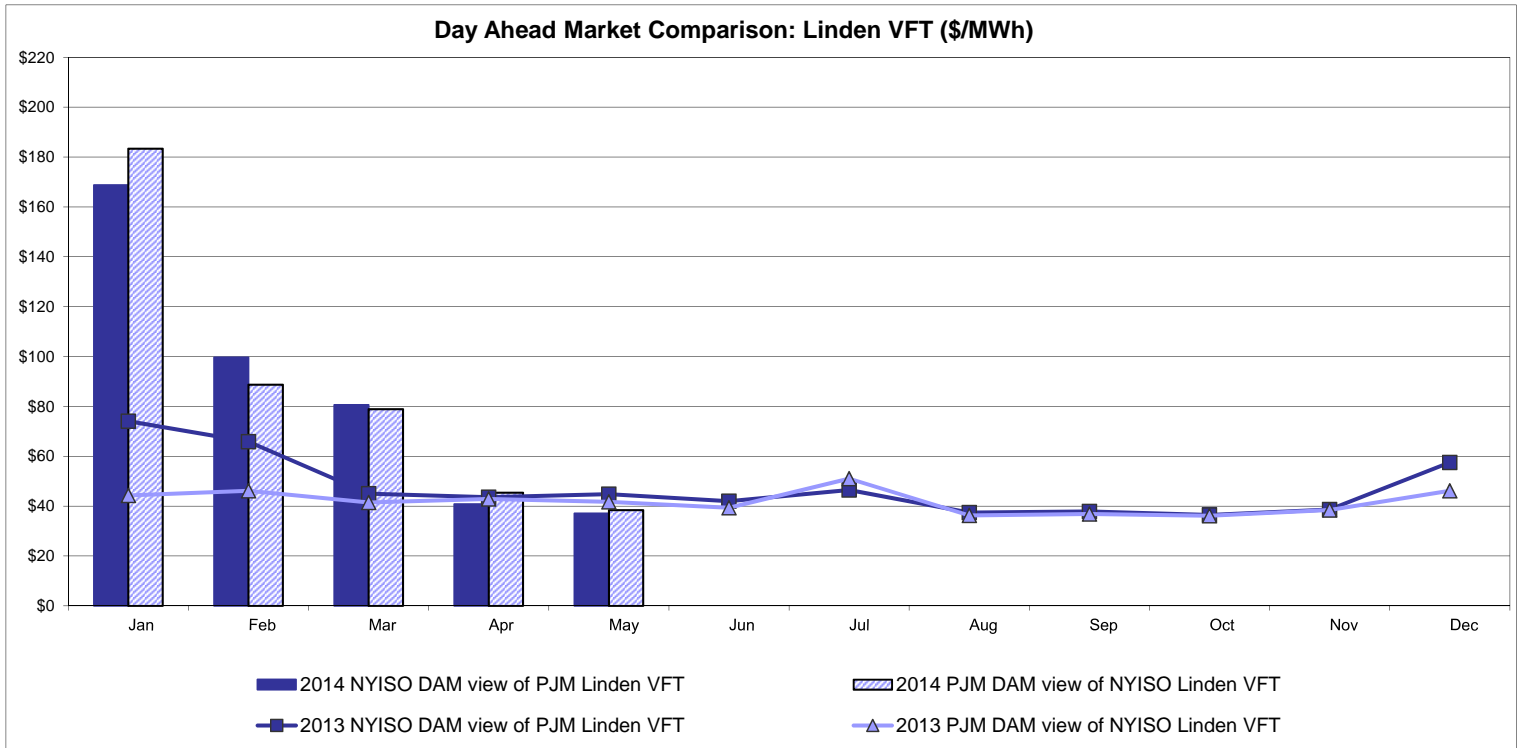


Real Time Market External Zone Comparison - HQ (\$/MWh)

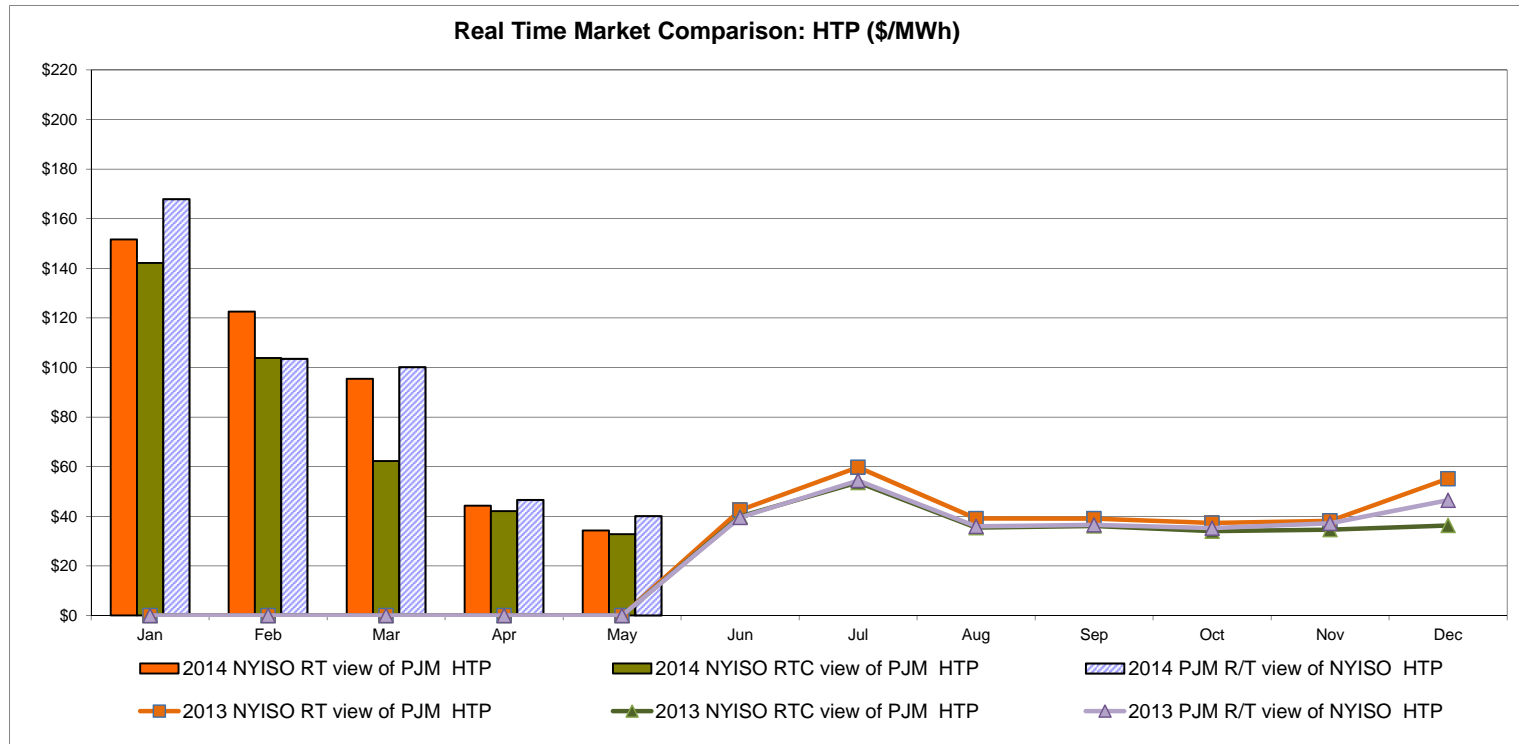
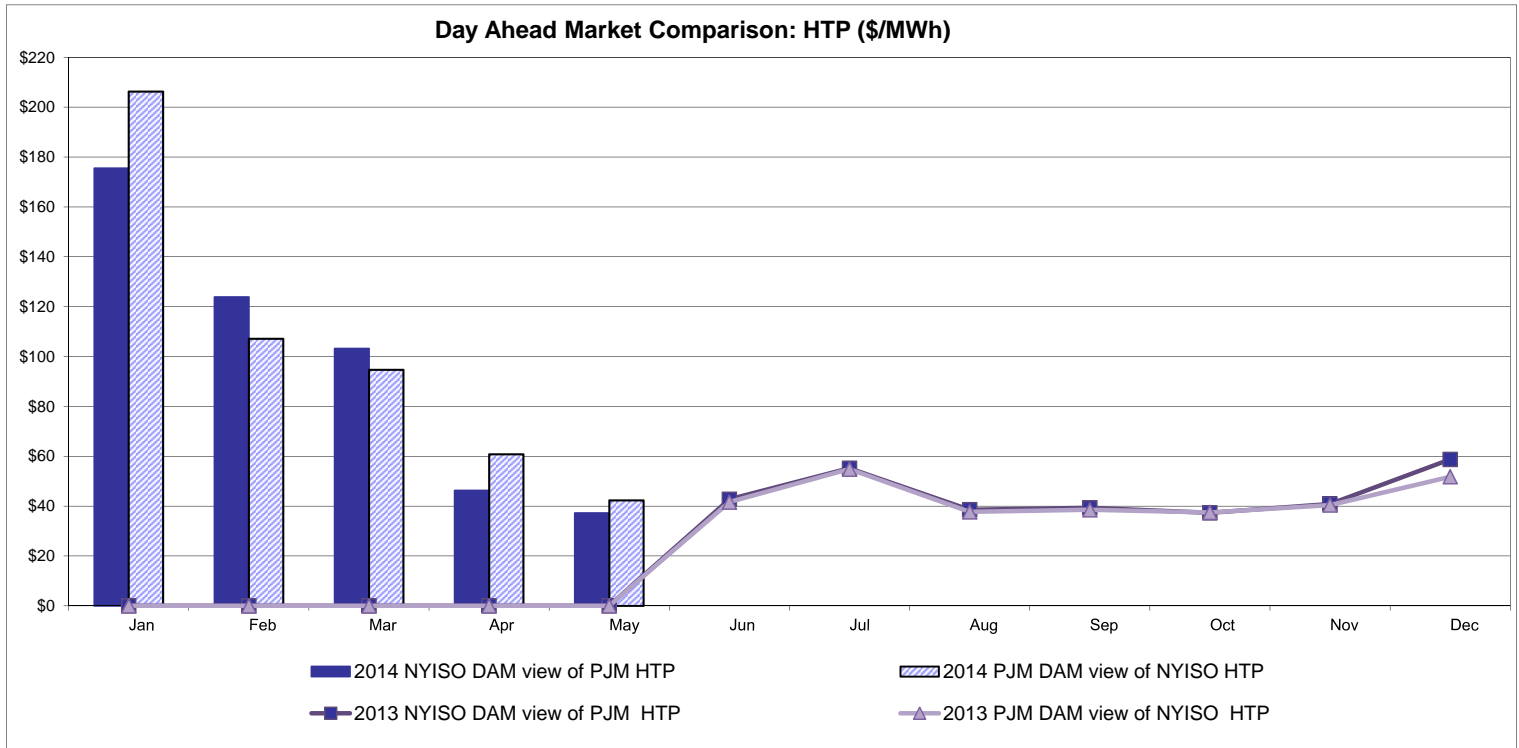


Note:
Hydro-Quebec Prices are unavailable.

External Controllable Line: Linden VFT (PJM)



External Controllable Line: Hudson (PJM)

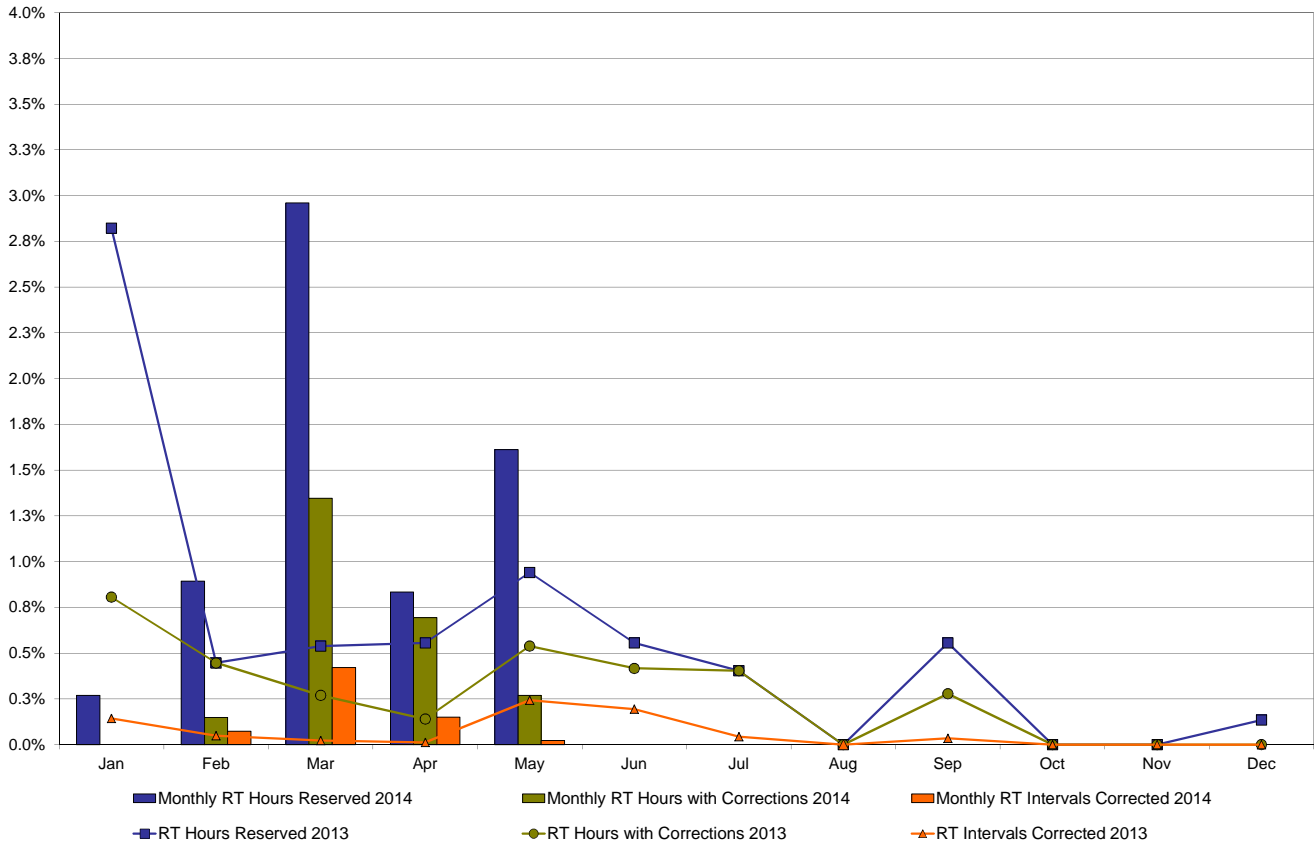


NYISO Real Time Price Correction Statistics

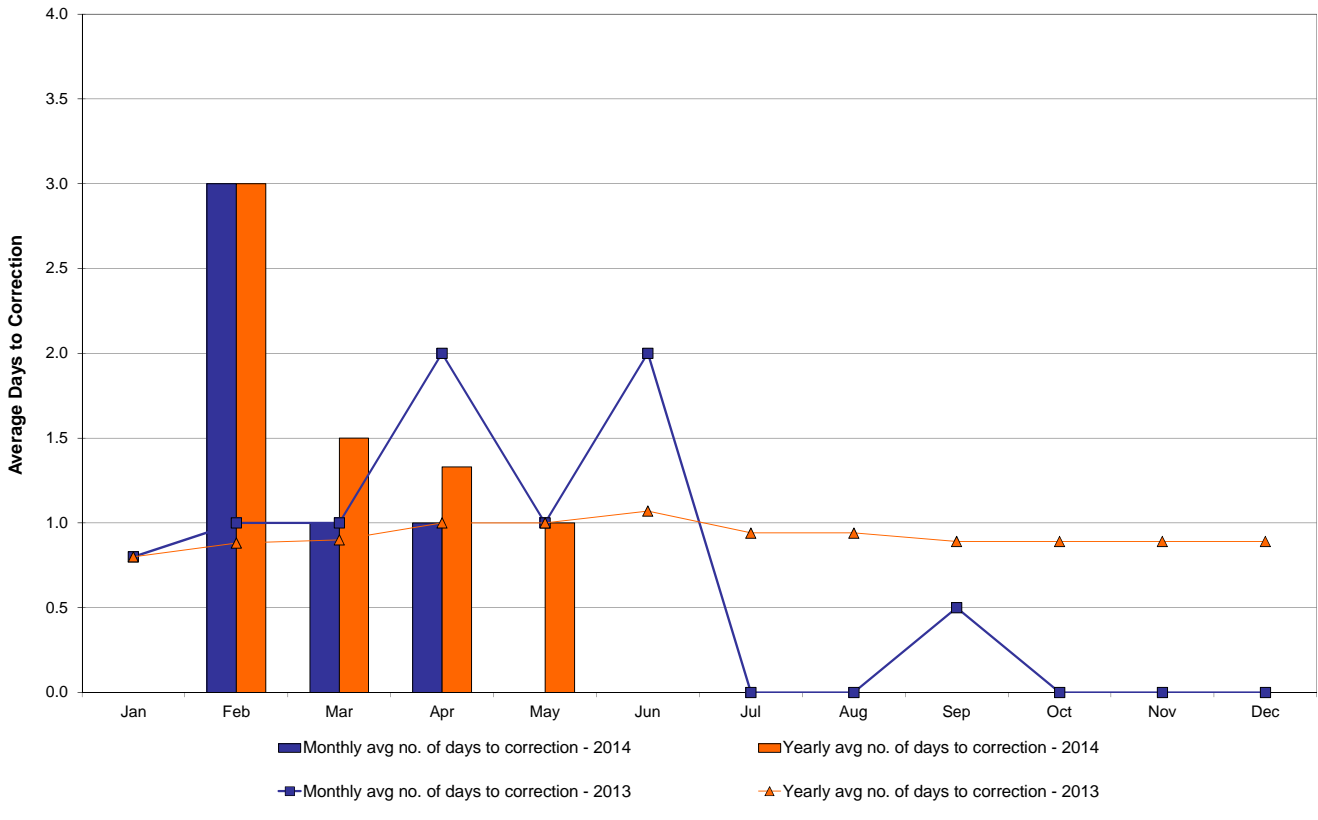
2014		<u>January</u>	<u>February</u>	<u>March</u>	<u>April</u>	<u>May</u>	<u>June</u>	<u>July</u>	<u>August</u>	<u>September</u>	<u>October</u>	<u>November</u>	<u>December</u>
Hour Corrections													
Number of hours with corrections	in the month	0	1	10	5	2							
Number of hours	in the month	744	672	743	720	744							
% of hours with corrections	in the month	0.00%	0.15%	1.35%	0.69%	0.27%							
% of hours with corrections	year-to-date	0.00%	0.07%	0.51%	0.56%	0.50%							
Interval Corrections													
Number of intervals corrected	in the month	0	6	38	13	2							
Number of intervals	in the month	9,232	8,205	9,023	8,720	9,030							
% of intervals corrected	in the month	0.00%	0.07%	0.42%	0.15%	0.02%							
% of intervals corrected	year-to-date	0.00%	0.03%	0.17%	0.16%	0.13%							
Hours Reserved													
Number of hours reserved	in the month	2	6	22	6	12							
Number of hours	in the month	744	672	743	720	744							
% of hours reserved	in the month	0.27%	0.89%	2.96%	0.83%	1.61%							
% of hours reserved	year-to-date	0.27%	0.56%	1.39%	1.25%	1.32%							
Days to Correction *													
Avg. number of days to correction	in the month	0.00	3.00	1.00	1.00	0.00							
Avg. number of days to correction	year-to-date	0.00	3.00	1.50	1.33	1.00							
Days Without Corrections													
Days without corrections	in the month	31	27	28	28	29							
Days without corrections	year-to-date	31	58	86	114	143							
2013		<u>January</u>	<u>February</u>	<u>March</u>	<u>April</u>	<u>May</u>	<u>June</u>	<u>July</u>	<u>August</u>	<u>September</u>	<u>October</u>	<u>November</u>	<u>December</u>
Hour Corrections													
Number of hours with corrections	in the month	6	3	2	1	4	3	3	0	2	0	0	0
Number of hours	in the month	744	672	743	720	744	720	744	744	720	744	721	744
% of hours with corrections	in the month	0.81%	0.45%	0.27%	0.14%	0.54%	0.42%	0.40%	0.00%	0.28%	0.00%	0.00%	0.00%
% of hours with corrections	year-to-date	0.81%	0.64%	0.51%	0.42%	0.44%	0.44%	0.43%	0.38%	0.37%	0.33%	0.30%	0.27%
Interval Corrections													
Number of intervals corrected	in the month	13	4	2	1	22	17	4	0	3	0	0	0
Number of intervals	in the month	9,104	8,230	9,026	8,727	9,083	8,740	9,079	9,002	8,760	9,041	8,854	9,073
% of intervals corrected	in the month	0.14%	0.05%	0.02%	0.01%	0.24%	0.19%	0.04%	0.00%	0.03%	0.00%	0.00%	0.00%
% of intervals corrected	year-to-date	0.14%	0.10%	0.07%	0.06%	0.10%	0.11%	0.10%	0.09%	0.08%	0.07%	0.07%	0.06%
Hours Reserved													
Number of hours reserved	in the month	21	3	4	4	7	4	3	0	4	0	0	1
Number of hours	in the month	744	672	743	720	744	720	744	744	720	744	721	744
% of hours reserved	in the month	2.82%	0.45%	0.54%	0.56%	0.94%	0.56%	0.40%	0.00%	0.56%	0.00%	0.00%	0.13%
% of hours reserved	year-to-date	2.82%	1.69%	1.30%	1.11%	1.08%	0.99%	0.90%	0.79%	0.76%	0.69%	0.62%	0.58%
Days to Correction *													
Avg. number of days to correction	in the month	0.80	1.00	1.00	2.00	1.00	2.00	0.00	0.00	0.50	0.00	0.00	0.00
Avg. number of days to correction	year-to-date	0.80	0.88	0.90	1.00	1.00	1.07	0.94	0.94	0.89	0.89	0.89	0.89
Days Without Corrections													
Days without corrections	in the month	26	25	29	29	28	29	29	31	28	31	30	31
Days without corrections	year-to-date	26	51	80	109	137	166	195	226	254	285	315	346

* Calendar days from reservation date.

Percentage of Real-Time Corrections

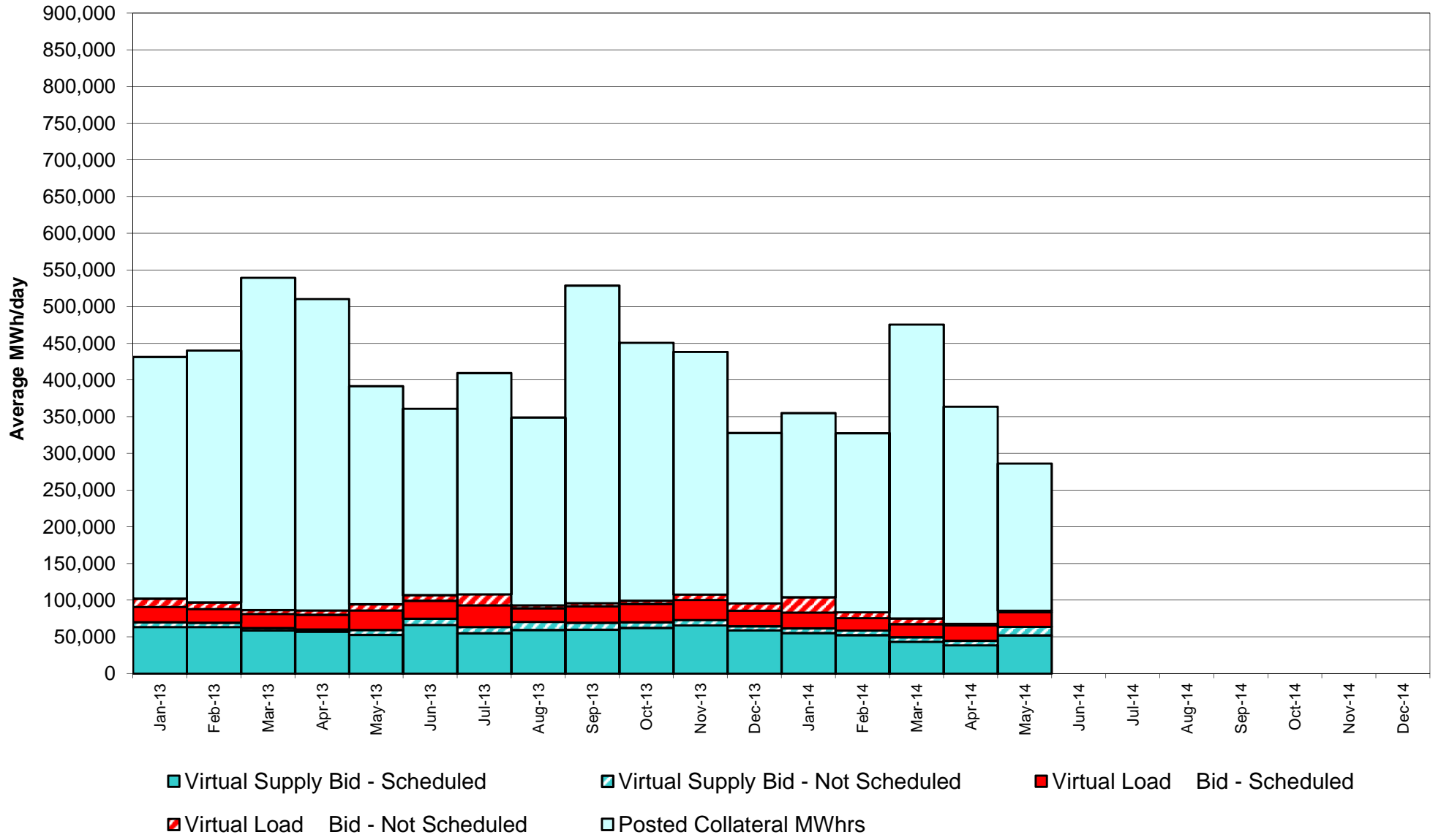


Annual average time period for making Price Corrections (from reservation date) *

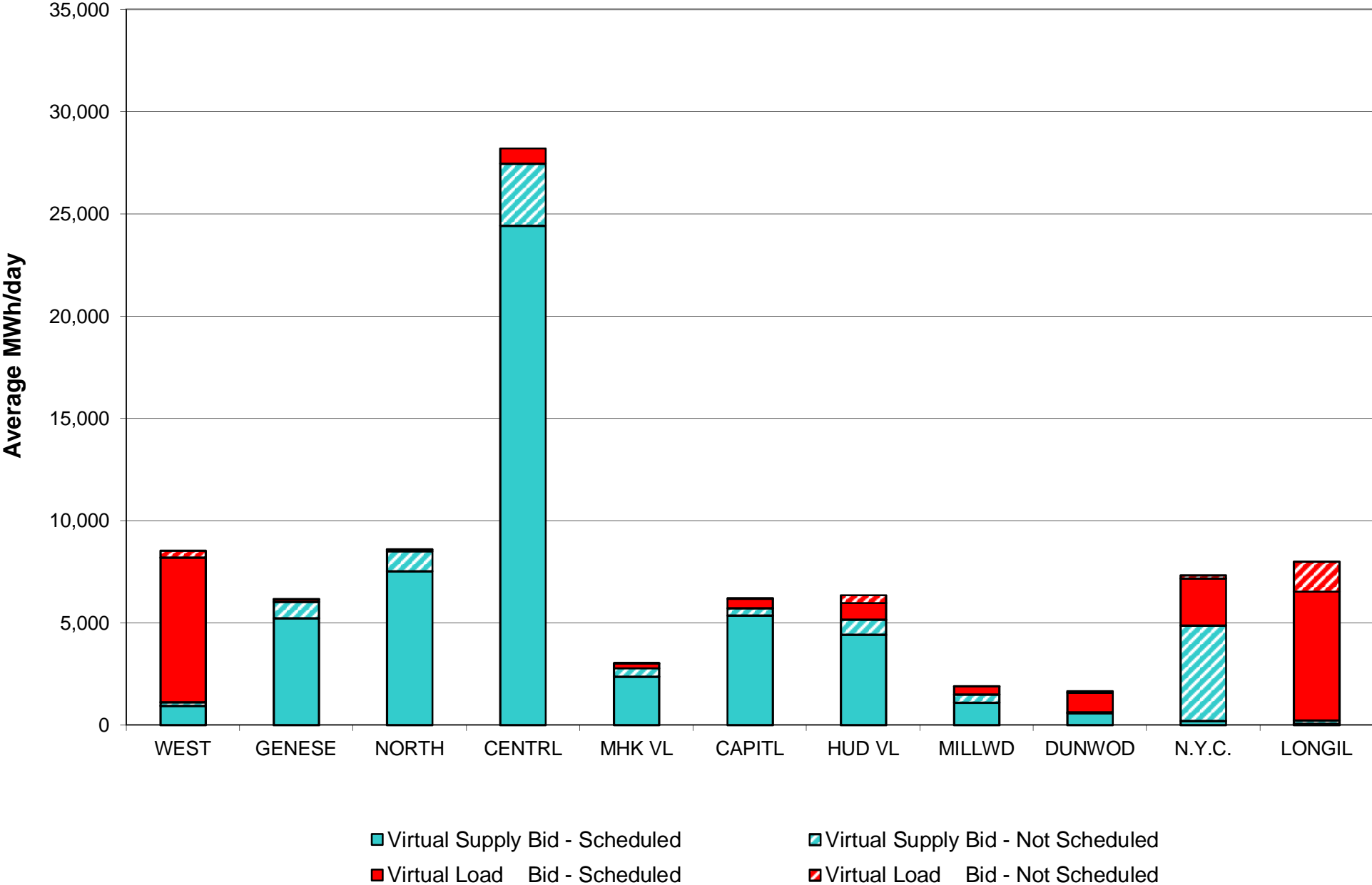


* Calendar days from reservation date.

NYISO Virtual Trading Average MWh per day



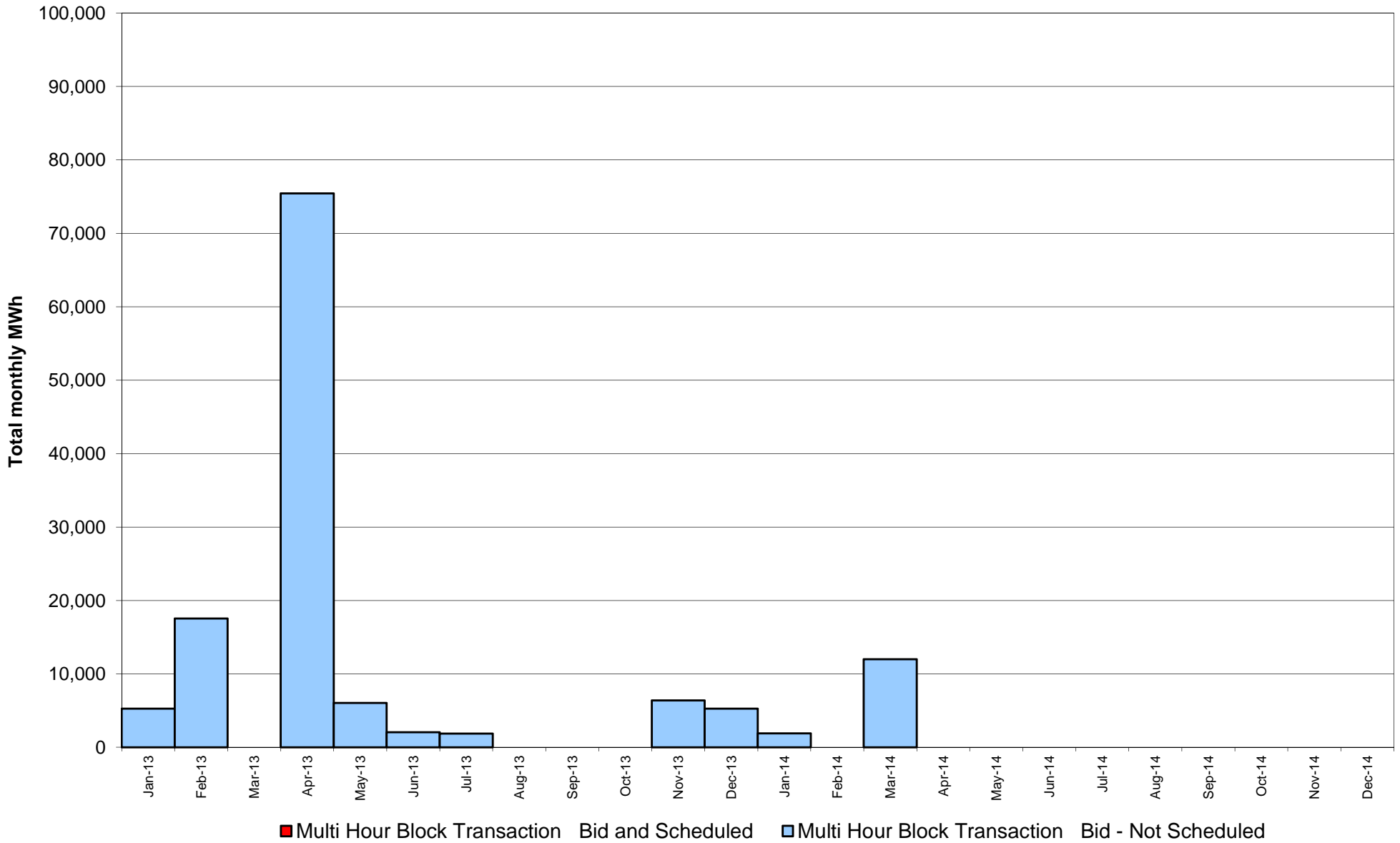
**Virtual Load and Supply Zonal Statistics
through May 31, 2014**



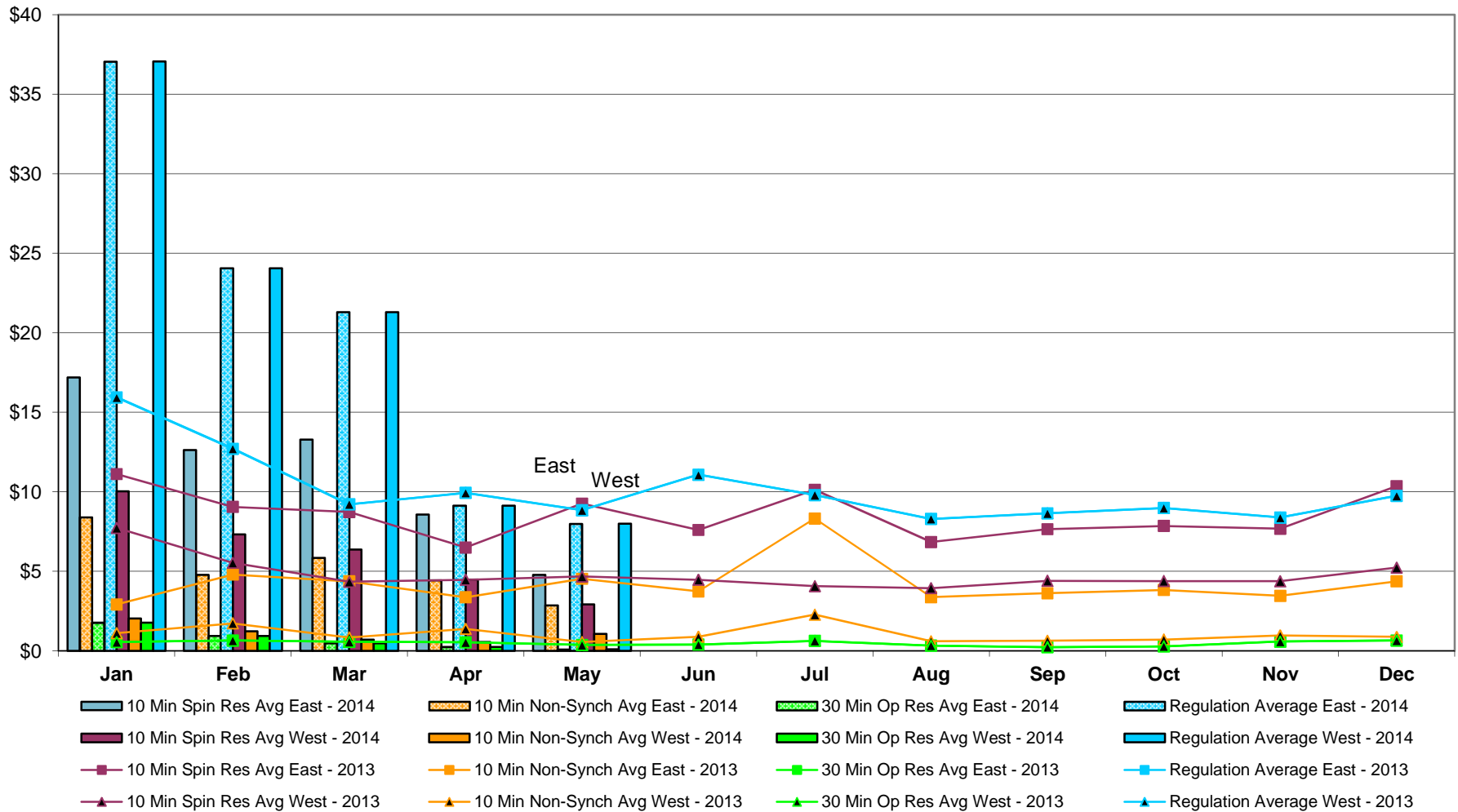
Virtual Load and Supply Zonal Statistics (Average MWh/day) - 2014

		Virtual Load Bid		Virtual Supply Bid				Virtual Load Bid		Virtual Supply Bid				Virtual Load Bid		Virtual Supply Bid	
Zone	Date	Scheduled	Not Scheduled	Scheduled	Not Scheduled	Zone	Date	Scheduled	Not Scheduled	Scheduled	Not Scheduled	Zone	Date	Scheduled	Not Scheduled	Scheduled	Not Scheduled
WEST	Jan-14	6,213	5,063	2,777	155	MHK VL	Jan-14	429	587	1,316	260	DUNWOD	Jan-14	354	631	2,182	268
	Feb-14	5,077	805	2,814	422		Feb-14	340	204	824	90		Feb-14	577	348	846	176
	Mar-14	4,982	601	2,874	159		Mar-14	415	527	826	106		Mar-14	481	473	1,794	146
	Apr-14	7,473	451	1,880	130		Apr-14	242	44	1,685	136		Apr-14	211	17	2,493	87
	May-14	7,071	353	952	158		May-14	231	7	2,372	412		May-14	930	75	580	67
	Jun-14						Jun-14						Jun-14				
	Jul-14						Jul-14						Jul-14				
	Aug-14						Aug-14						Aug-14				
	Sep-14						Sep-14						Sep-14				
	Oct-14						Oct-14						Oct-14				
	Nov-14						Nov-14						Nov-14				
	Dec-14						Dec-14						Dec-14				
	GENESE	Jan-14	434	279	5,230		425	CAPITL	Jan-14	1,439	1,278		3,985	379	N.Y.C.	Jan-14	2,627
Feb-14		473	107	5,250	487	Feb-14	1,116		871	4,100	127	Feb-14	2,470	1,392		521	625
Mar-14		1,164	176	6,014	88	Mar-14	1,237		939	4,623	129	Mar-14	3,075	1,308		152	1,172
Apr-14		551	13	8,329	173	Apr-14	780		107	4,476	133	Apr-14	3,335	289		152	2,900
May-14		134	18	5,223	798	May-14	479		17	5,367	337	May-14	2,276	165		205	4,679
Jun-14						Jun-14						Jun-14					
Jul-14						Jul-14						Jul-14					
Aug-14						Aug-14						Aug-14					
Sep-14						Sep-14						Sep-14					
Oct-14						Oct-14						Oct-14					
Nov-14						Nov-14						Nov-14					
Dec-14						Dec-14						Dec-14					
NORTH		Jan-14	47	168	6,579	1,592	HUD VL		Jan-14	1,612	1,554	4,091	466	LONGIL		Jan-14	7,605
	Feb-14	110	4	5,732	1,308	Feb-14		634	1,325	3,963	792	Feb-14	5,365		2,494	145	230
	Mar-14	121	10	6,390	895	Mar-14		552	1,130	3,644	1,081	Mar-14	5,083		1,885	166	223
	Apr-14	67	4	8,216	1,007	Apr-14		413	725	4,889	918	Apr-14	7,434		579	102	18
	May-14	89	1	7,535	955	May-14		817	358	4,407	760	May-14	6,303		1,452	83	151
	Jun-14					Jun-14						Jun-14					
	Jul-14					Jul-14						Jul-14					
	Aug-14					Aug-14						Aug-14					
	Sep-14					Sep-14						Sep-14					
	Oct-14					Oct-14						Oct-14					
	Nov-14					Nov-14						Nov-14					
	Dec-14					Dec-14						Dec-14					
	CENTRL	Jan-14	675	392	27,758	624		MILLWD	Jan-14	235	401	848	470		NYISO	Jan-14	21,670
Feb-14		419	155	27,395	1,484	Feb-14	324		183	1,015	357	Feb-14	16,907	7,888		52,604	6,097
Mar-14		466	359	16,130	1,822	Mar-14	278		293	872	262	Mar-14	17,855	7,700		43,485	6,082
Apr-14		222	13	5,535	430	Apr-14	119		54	878	255	Apr-14	20,848	2,295		38,637	6,187
May-14		743	0	24,434	3,035	May-14	395		32	1,104	392	May-14	19,467	2,478		52,261	11,742
Jun-14						Jun-14						Jun-14					
Jul-14						Jul-14						Jul-14					
Aug-14						Aug-14						Aug-14					
Sep-14						Sep-14						Sep-14					
Oct-14						Oct-14						Oct-14					
Nov-14						Nov-14						Nov-14					
Dec-14						Dec-14						Dec-14					

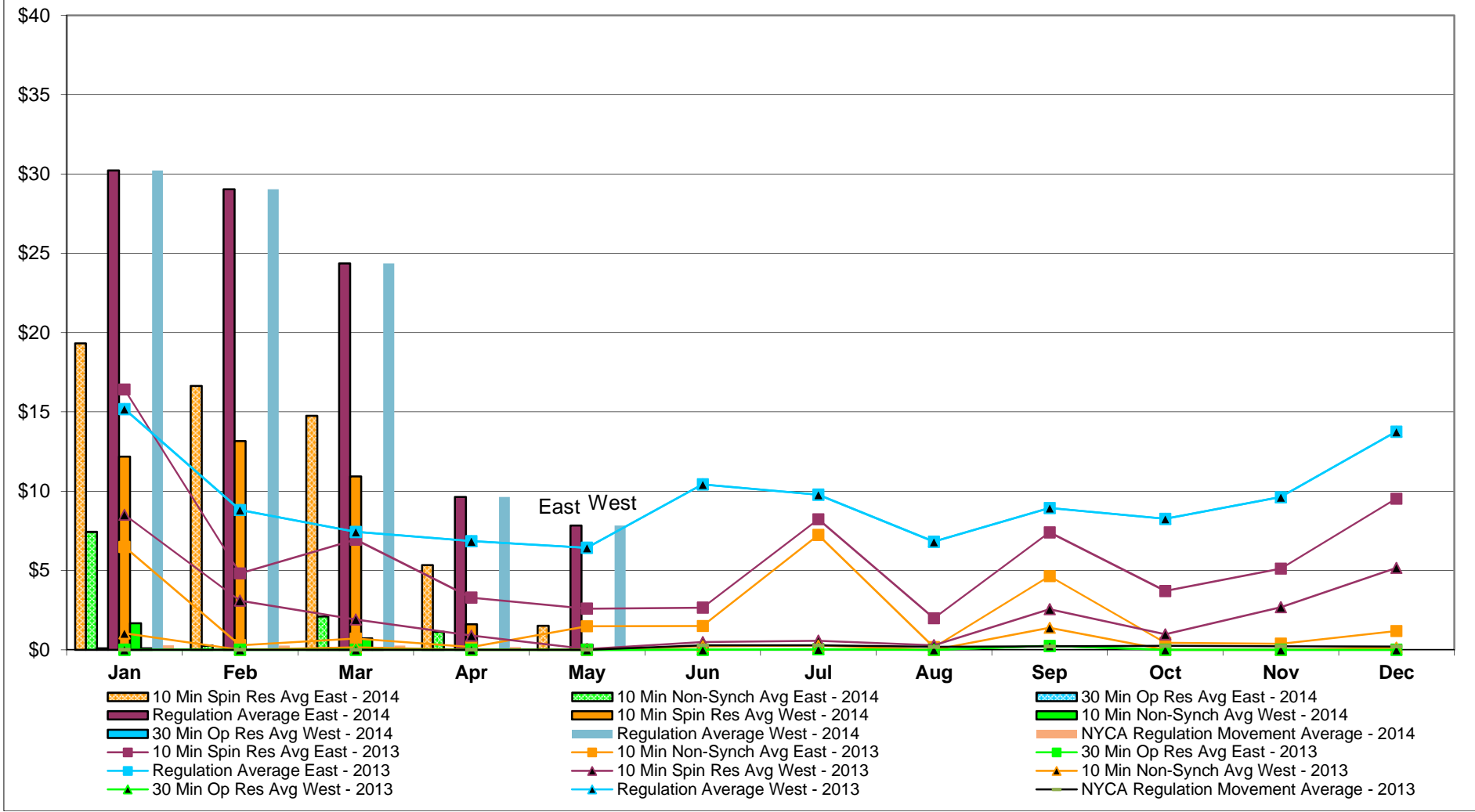
NYISO Multi Hour Block Transactions Monthly Total MWh



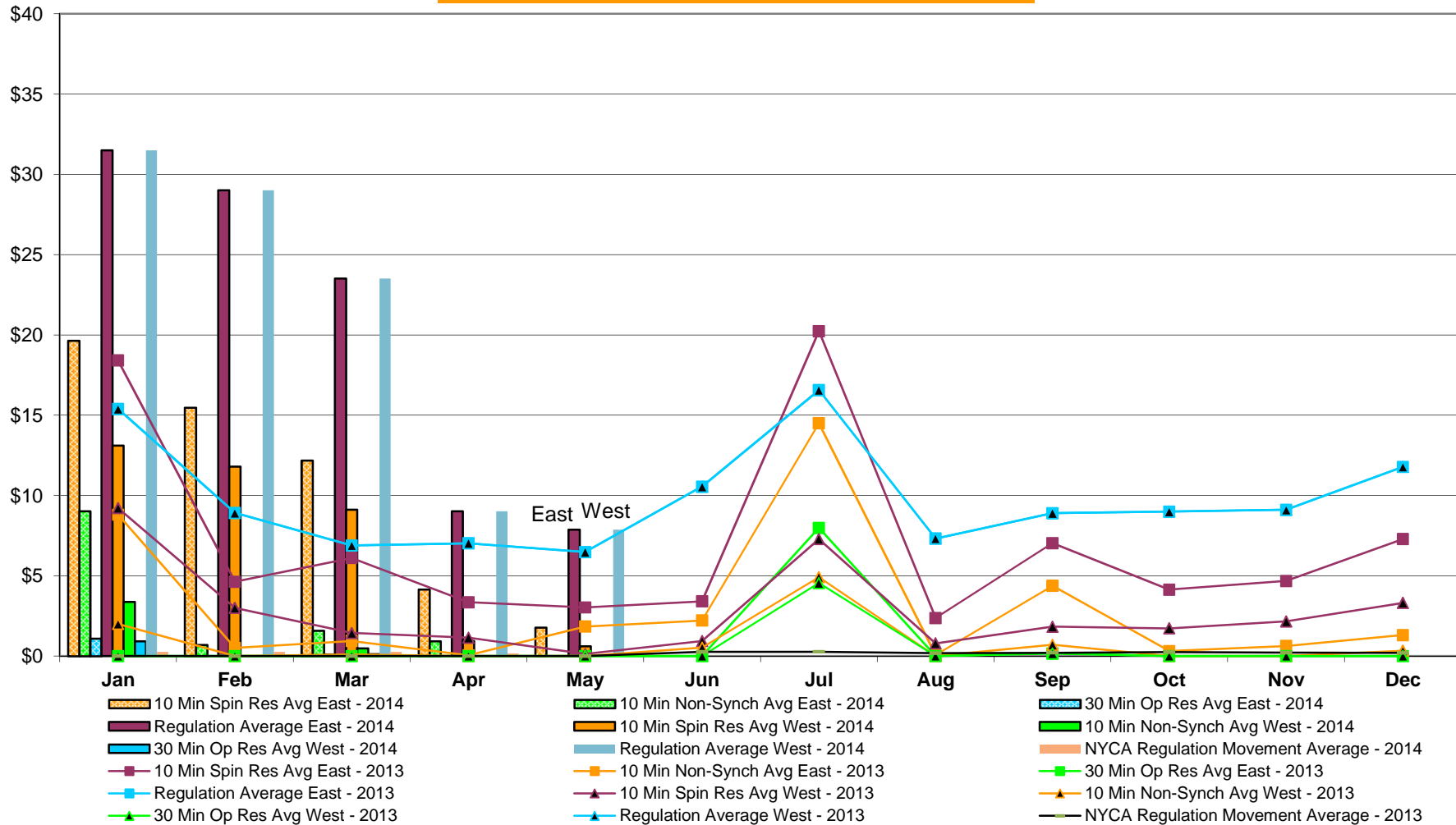
NYISO Monthly Average Ancillary Service Prices Day Ahead Market 2013 - 2014



NYISO Monthly Average Ancillary Service Prices RTC Market 2013 - 2014



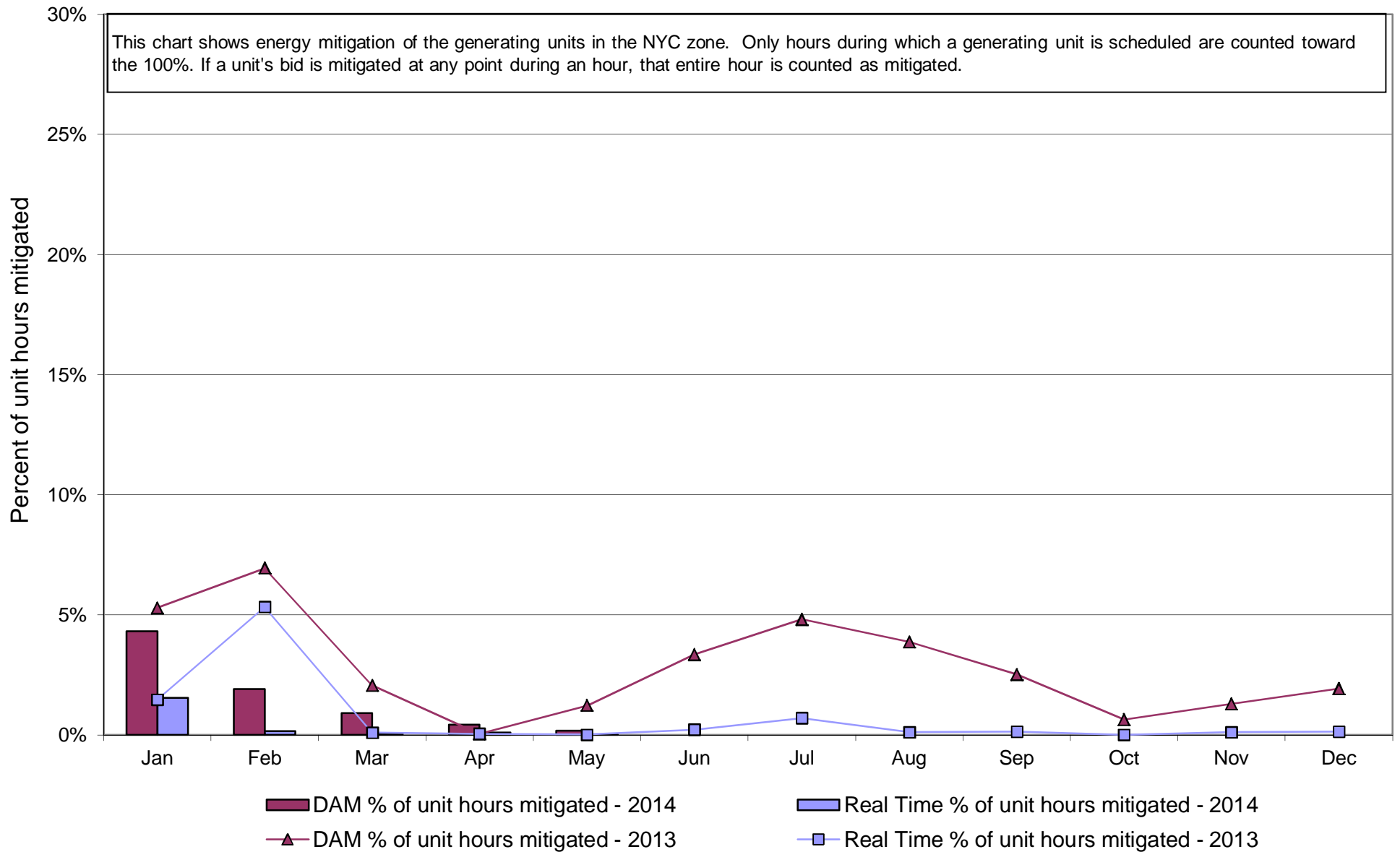
NYISO Monthly Average Ancillary Service Prices Real Time Market 2013 - 2014



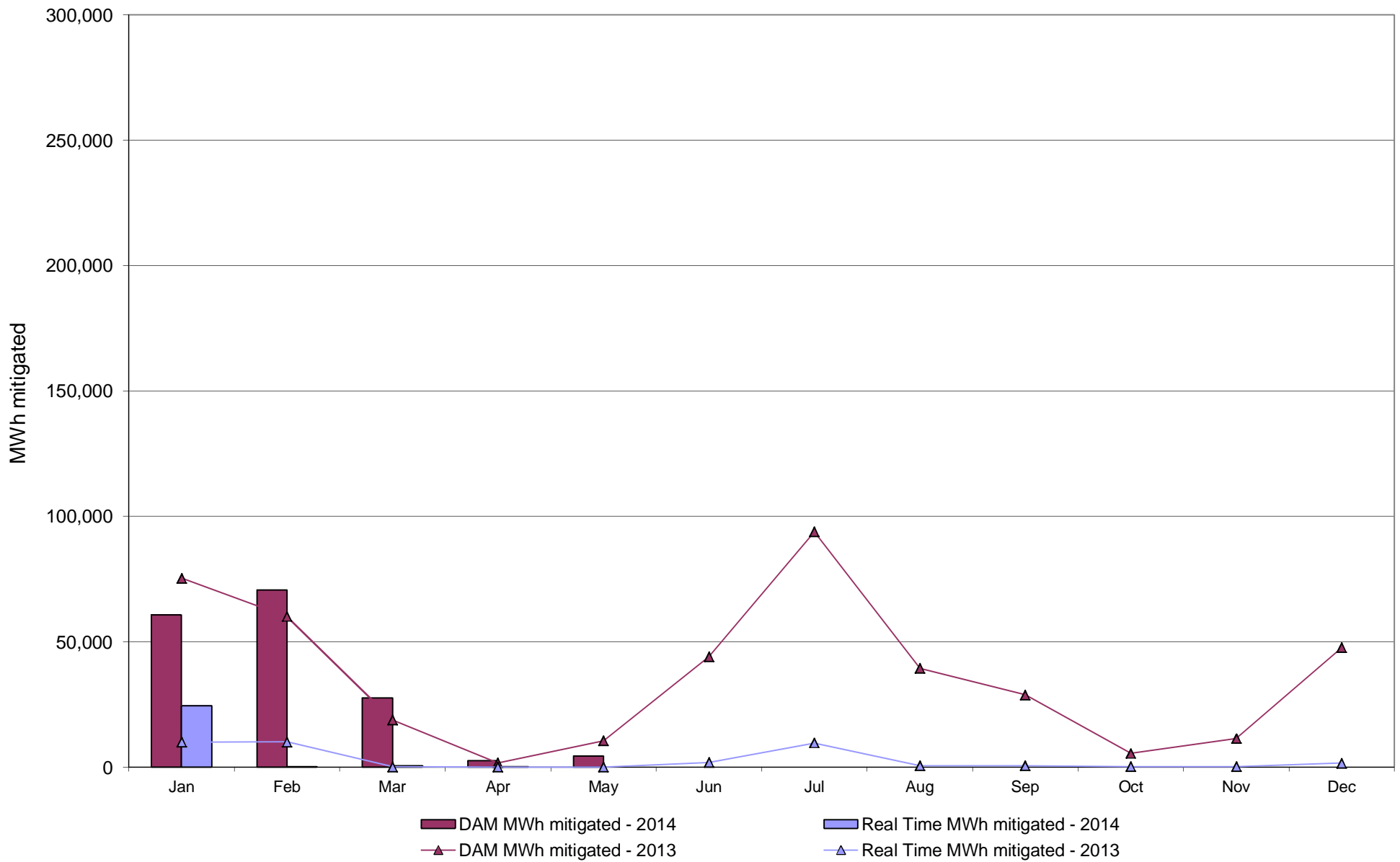
NYISO Markets Ancillary Services Statistics - Unweighted Price (\$/MWH)

2014	<u>January</u>	<u>February</u>	<u>March</u>	<u>April</u>	<u>May</u>	<u>June</u>	<u>July</u>	<u>August</u>	<u>September</u>	<u>October</u>	<u>November</u>	<u>December</u>
Day Ahead Market												
10 Min Spin East	17.19	12.62	13.27	8.57	4.77							
10 Min Spin West	10.02	7.32	6.36	4.47	2.92							
10 Min Non Synch East	8.40	4.78	5.86	4.44	2.86							
10 Min Non Synch West	2.02	1.23	0.70	0.55	1.06							
30 Min East	1.77	0.93	0.47	0.24	0.09							
30 Min West	1.77	0.93	0.47	0.24	0.09							
Regulation East	37.05	24.05	21.29	9.12	7.99							
Regulation West	37.05	24.05	21.29	9.12	7.99							
RTC Market												
10 Min Spin East	19.32	16.64	14.76	5.34	1.52							
10 Min Spin West	12.18	13.16	10.93	1.61	0.33							
10 Min Non Synch East	7.43	0.26	2.10	1.14	0.00							
10 Min Non Synch West	1.68	0.00	0.72	0.00	0.00							
30 Min East	0.08	0.00	0.12	0.00	0.00							
30 Min West	0.08	0.00	0.12	0.00	0.00							
Regulation East	30.21	29.03	24.35	9.64	7.83							
Regulation West	30.21	29.03	24.35	9.64	7.83							
NYCA Regulation Movement	0.28	0.27	0.26	0.17	0.15							
Real Time Market												
10 Min Spin East	19.64	15.48	12.19	4.15	1.78							
10 Min Spin West	13.10	11.80	9.11	0.94	0.61							
10 Min Non Synch East	9.03	0.70	1.59	0.93	0.00							
10 Min Non Synch West	3.37	0.00	0.48	0.00	0.00							
30 Min East	1.10	0.00	0.11	0.00	0.00							
30 Min West	0.92	0.00	0.11	0.00	0.00							
Regulation East	31.50	29.02	23.52	9.02	7.87							
Regulation West	31.50	29.02	23.52	9.02	7.87							
NYCA Regulation Movement	0.27	0.27	0.27	0.17	0.15							
2013	<u>January</u>	<u>February</u>	<u>March</u>	<u>April</u>	<u>May</u>	<u>June</u>	<u>July</u>	<u>August</u>	<u>September</u>	<u>October</u>	<u>November</u>	<u>December</u>
Day Ahead Market												
10 Min Spin East	11.12	9.05	8.73	6.49	9.25	7.59	10.13	6.84	7.65	7.85	7.68	10.35
10 Min Spin West	7.72	5.53	4.34	4.46	4.67	4.46	4.06	3.94	4.40	4.38	4.37	5.23
10 Min Non Synch East	2.91	4.79	4.36	3.36	4.52	3.73	8.31	3.37	3.62	3.82	3.45	4.37
10 Min Non Synch West	1.11	1.73	0.84	1.38	0.55	0.88	2.27	0.60	0.63	0.70	0.96	0.87
30 Min East	0.56	0.65	0.56	0.53	0.36	0.40	0.62	0.33	0.23	0.28	0.59	0.65
30 Min West	0.56	0.65	0.56	0.53	0.36	0.40	0.62	0.33	0.23	0.28	0.59	0.65
Regulation East	15.94	12.70	9.21	9.93	8.84	11.07	9.80	8.29	8.65	8.98	8.38	9.74
Regulation West	15.94	12.70	9.21	9.93	8.84	11.07	9.80	8.29	8.65	8.98	8.38	9.74
RTC Market												
10 Min Spin East	16.42	4.81	6.94	3.28	2.59	2.65	8.23	1.99	7.40	3.70	5.11	9.53
10 Min Spin West	8.50	3.10	1.90	0.90	0.05	0.48	0.57	0.29	2.56	0.97	2.68	5.16
10 Min Non Synch East	6.48	0.28	0.70	0.18	1.48	1.50	7.23	0.16	4.63	0.44	0.38	1.17
10 Min Non Synch West	1.04	0.00	0.15	0.00	0.00	0.22	0.26	0.00	1.39	0.00	0.00	0.13
30 Min East	0.00	0.00	0.00	0.00	0.00	0.00	0.03	0.00	0.24	0.00	0.00	0.00
30 Min West	0.00	0.00	0.00	0.00	0.00	0.00	0.03	0.00	0.24	0.00	0.00	0.00
Regulation East	15.18	8.81	7.43	6.84	6.42	10.42	9.77	6.81	8.93	8.26	9.63	13.75
Regulation West	15.18	8.81	7.43	6.84	6.42	10.42	9.77	6.81	8.93	8.26	9.63	13.75
NYCA Regulation Movement	0.00	0.00	0.00	0.00	0.00	0.27	0.28	0.18	0.21	0.24	0.22	0.20
Real Time Market												
10 Min Spin East	18.42	4.63	6.12	3.35	3.03	3.41	20.24	2.37	7.03	4.14	4.68	7.29
10 Min Spin West	9.22	3.00	1.44	1.15	0.13	0.94	7.29	0.80	1.83	1.73	2.16	3.31
10 Min Non Synch East	8.81	0.52	0.93	0.06	1.84	2.22	14.51	0.07	4.37	0.31	0.63	1.31
10 Min Non Synch West	2.00	0.00	0.10	0.00	0.00	0.53	4.91	0.00	0.70	0.00	0.00	0.34
30 Min East	0.00	0.00	0.00	0.00	0.00	0.00	7.99	0.00	0.17	0.00	0.00	0.00
30 Min West	0.00	0.00	0.00	0.00	0.00	0.00	4.55	0.00	0.17	0.00	0.00	0.00
Regulation East	15.40	8.92	6.89	7.03	6.48	10.55	16.57	7.32	8.90	9.00	9.12	11.78
Regulation West	15.40	8.92	6.89	7.03	6.48	10.55	16.57	7.32	8.90	9.00	9.12	11.78
NYCA Regulation Movement	0.00	0.00	0.00	0.00	0.00	0.27	0.27	0.19	0.21	0.24	0.22	0.20

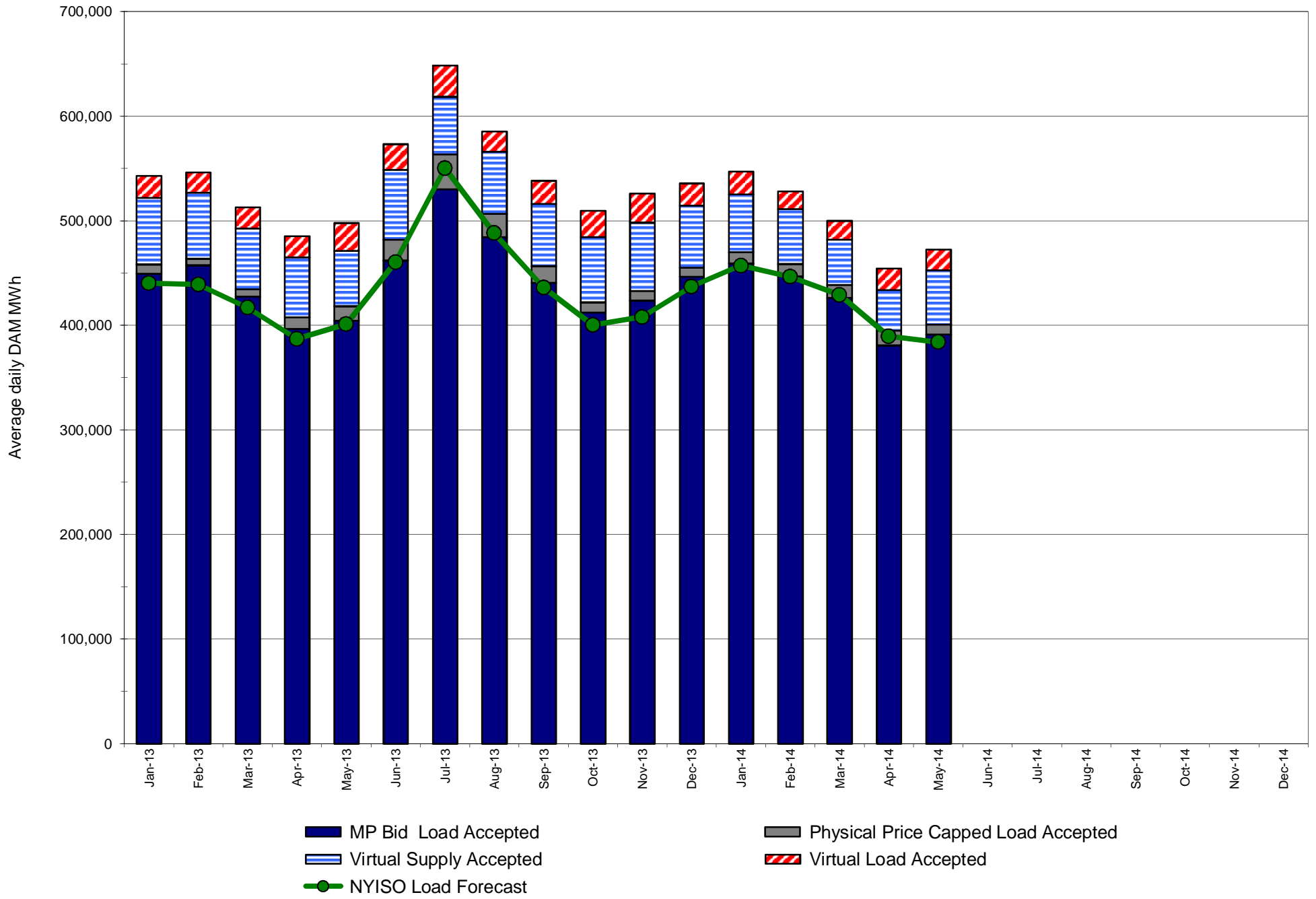
NYISO In City Energy Mitigation - AMP (NYC Zone) 2013 - 2014 Percentage of committed unit-hours mitigated



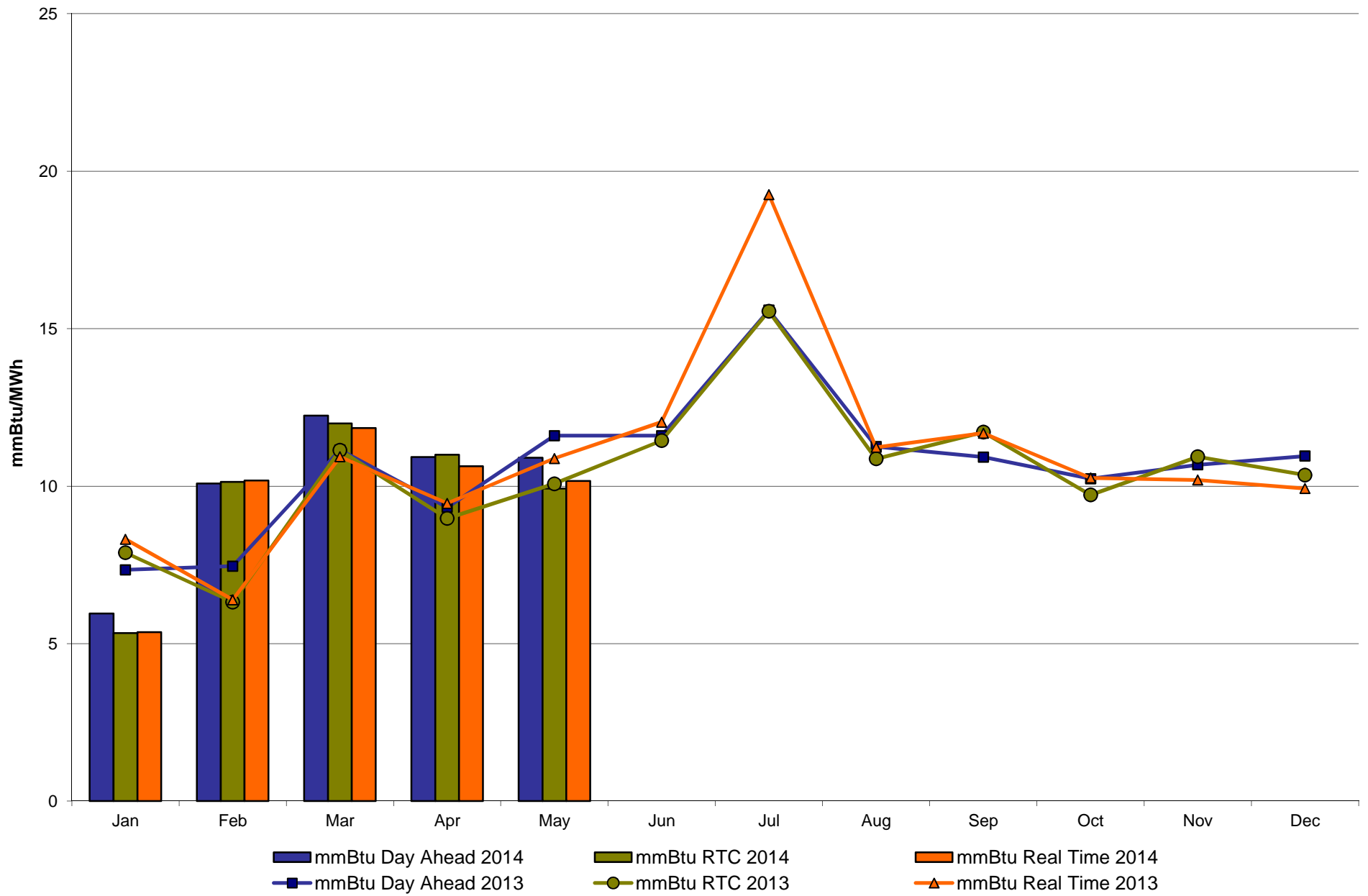
**NYISO In City Energy Mitigation (NYC Zone) 2013 - 2014
Monthly megawatt hours mitigated**



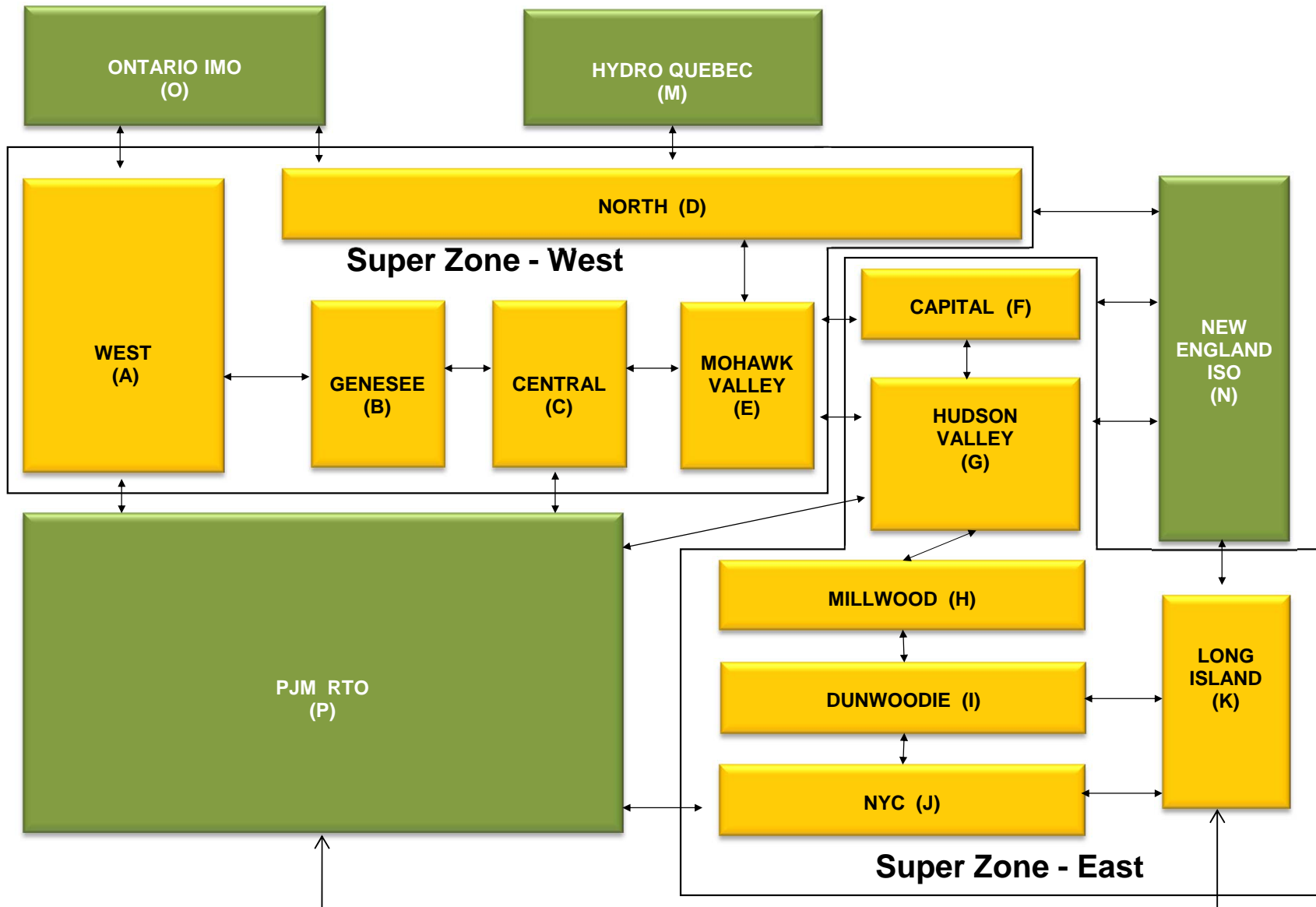
NYISO Average Daily DAM Load Bid Summary



Monthly Implied Heat Rate 2013-2014



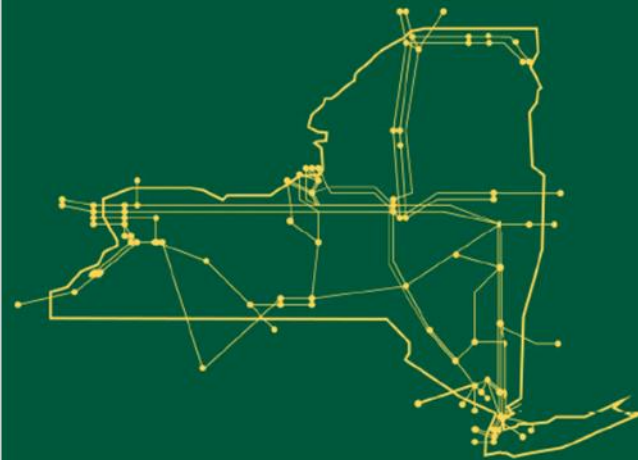
NYISO LBMP ZONES



Billing Codes for Chart 4-C

Chart - C Category Name	Billing Code	Billing Category Name
Bid Production Cost Guarantee Balancing	81203	Balancing NYISO Bid Production Cost Guarantee - Internal Units
Bid Production Cost Guarantee Balancing	81204	Balancing NYISO Bid Production Cost Guarantee - External Units
Bid Production Cost Guarantee Balancing	81205	Balancing NYISO Bid Production Cost Guarantee Expenditure due to Curtailed Imports
Bid Production Cost Guarantee Balancing	81208	Balancing NYISO Bid Production Cost Guarantee - Internal Units
Bid Production Cost Guarantee Balancing	81209	Balancing NYISO Bid Production Cost Guarantee - External Units
Bid Production Cost Guarantee Balancing	81213	Balancing NYISO Bid Production Cost Guarantee Expenditure due to Curtailed Imports
Bid Production Cost Guarantee DAM	81201	DAM NYISO Bid Production Cost Guarantee - Internal Units
Bid Production Cost Guarantee DAM	84001	EDRP/SCR Demand Response - Local
Bid Production Cost Guarantee DAM	84101	EDRP/SCR Demand Response - NYISO Wide
Bid Production Cost Guarantee DAM	81401	DAM Price Responsive Load Program
Bid Production Cost Guarantee DAM	81202	DAM NYISO Bid Production Cost Guarantee - External Units
Bid Production Cost Guarantee DAM	81206	DAM NYISO Bid Production Cost Guarantee - Internal Units
Bid Production Cost Guarantee DAM	81207	DAM NYISO Bid Production Cost Guarantee - External Units
Bid Production Cost Guarantee DAM Virtual	81501	DAM Virtual Bid Production Cost Guarantee
DAM Contract Balancing	81315	DAM Contract Balancing
DAM Contract Balancing	81317	DAM Contract Balancing
Local Reliability Balancing	81002	Balancing Local Reliability Bid Production Cost Guarantee
Local Reliability Balancing	83901	Margin Restoration (MOB) Revenue
Local Reliability DAM	81001	DAM Local Reliability Bid Production Cost Guarantee
NYISO Cost of Operations	80901	NYISO Cost Of Operations
NYISO Cost of Operations	80902	NYISO Cost Of Operations
NYISO Cost of Operations	83501	NYISO Cost Of Operations
NYISO Cost of Operations	83502	NYISO Cost Of Operations
Residuals Balancing	81302	Balancing Market Energy Residual
Residuals Balancing	81304	Balancing Market Loss Residual
Residuals Balancing	81305	Balancing Market Congestion Balancing
Residuals Balancing	81306	Emergency Energy Purchases
Residuals Balancing	81307	Emergency Energy Sales
Residuals Balancing	81309	Balancing Market Energy Residual
Residuals Balancing	81311	Balancing Market Loss Residual
Residuals Balancing	81312	Balancing Market Congestion Balancing
Residuals Balancing	81313	Emergency Energy Purchases
Residuals Balancing	81314	Emergency Energy Sales
Residuals DAM	81301	Day Ahead Market Energy Residual
Residuals DAM	81303	Day Ahead Market Loss Residual
Residuals DAM	81308	Day Ahead Market Energy Residual
Residuals DAM	81310	Day Ahead Market Loss Residual

The New York Independent System Operator (NYISO) is a not-for-profit corporation responsible for operating the state's bulk electricity grid, administering New York's competitive wholesale electricity markets, conducting comprehensive long-term planning for the state's electric power system, and advancing the technological infrastructure of the electric system serving the Empire State.



www.nyiso.com

Summary Description of Upcoming Regulatory Compliance Filings, Recently Submitted Filings and Issued Orders on NYISO Matters

Upcoming Compliance Filings

Filing Due Date	Upcoming Compliance Filings (Description)	Docket Number
06/26/2014	5/27/2014 FERC order directs NYISO to submit a compliance filing within 30 days to revise the rebuttable presumption of its pivotal supplier threshold for a NCZ by deleting the current exclusion of forward capacity sales in MST Section 23.4.5.5(1)	ER13-1380-003
08/04/2014	11/22/13 FERC order requiring each public utility Transmission Provider to file in compliance with Order No. 792 the <i>pro forma</i> language included in Order No. 792 without variation re: revised small generator interconnection agreements and procedures	RM13-2-000

Recently Issued Orders

Filing Date	Filing Summary (Order issued)	Docket Number	Order Date	Order Summary
04/25/2014	NYISO filing re: motion requesting change in the reporting time frame for the broader regional market report from semiannual to annual	ER08-1281-012	06/02/2014	FERC letter order granted request to change the reporting time frame requirement
05/02/2014	NYISO filing re: revisions to the NYISO/PJM JOA concerning the RTOs' implementation of the market-to-market coordination process when New York is in a storm watch condition or one of the two Ramapo PARS is out of service	ER14-1868-000	06/04/2014	FERC letter order accepted revisions effective 6/11/2014, as requested

Recently Submitted Filings

Filing Date	Filing Summary	Docket Number
06/02/2014	NYISO filing re: FERC Form 714 – annual electric balancing authority area and planning area report	No. Docket No.
06/02/2014	NYISO filing re: 2014 semi-annual new generation and demand response report	ER01-3001-000 ER03-647-000
06/03/2014	NYISO filing re: comments on the PSC motion to establish policies and procedures regarding transmission planning for public policy purposes	PSC Case No. 14-E-0068

Final

06/03/2014	NYISO filing re: limited answer to TC Ravenswood concerning its application to implement a reliability oil burn service cost of service rate schedule	ER14-1711-000
06/04/2014	NYISO filing re: two-week notice of implementation date of tariff revisions to permit improved fuel indexing of day-ahead generator reference levels	ER14-1735-001
06/05/2014	NYISO filing re: notification of tariff implementation error and request for limited tariff waiver concerning possible portfolio physical withholding in the NYCA	ER14-2142-000
06/05/2014	NYISO filing re: answer to the motion to intervene and protest of TC Ravenswood concerning NYISO's submission of an unexecuted minimum oil burn service agreement	ER14-1822-000
06/05/2014	NYISO filing re: reply comments in response to the Boundless Energy comments concerning the treatment of developers in the PSC AC transmission proceeding	PSC Case No. 13-E-0488
06/10/2014	NYISO filing re: 1 st Quarter 2014 Electric Quarterly Report	ER02-2001-000
06/13/2014	NYISO filing re: verified report of construction loan costs and expenses	PSC Case No. 12-E-0168
06/13/2014	NYISO filing re: confidential three-month reliability commitment data report	PSC Matter No. 10-02007
06/18/2014	NYISO filing re: motion to intervene and comment in the Erie Power proceeding in which it requests certain waivers related to the proposed return of service of a decommissioned cogeneration plant	ER14-2056-000

Final